

# MX PLUS

## Facility Solutions



### KEY BENEFITS

- Tool-less Components – ¼ turn connections; double O-ring design
- Snap-on Cover
- Large, easy-to-use paddles with locking catch
- Engines slide into snap-guides for easy service and re-configuration
- Easily serviced diaphragm with ¼ turn cover
- Compact footprint
- Both Aire-Gap and Flex-Gap backflow devices to meet national and local codes

MX Plus dispensers are field serviceable and highly flexible proportioners, offering configurations that allow for up to eight products and two flow rates with a choice of Flex-Gap or Aire-Gap back flow prevention.

Dispensing is activated by pushing smooth-operating large buttons that can be locked into the on position for hands-free dispensing. Simply engage the catch to keep the flow open then press the button again and release to stop the flow. Spray bottles can be filled using one hand by pushing the bottle against the actuator bar.

One-engine and two-engine cabinets are available and may be equipped with either a single product engine or a dial 4 selector engine for each button. Designed for flexibility, each MX Plus can be reconfigured several ways in the field without tools.

The water inlet can be quickly swapped from one side to the other with a simple quarter turn of the water quick connect. Single product engines can be replaced with a dial 4 selector engine in a few simple steps: Slide the engine assembly out of the snap guides. Remove the single product engine with a quarter turn. Replace with a dial-4 assembly. Pop out the blanking plate from the cover to reveal a round hole for the dial selector.

Connect your four chemical supply lines and replace the snap-on cover.



# Trusted solutions. Cleaning made simple.

## TECHNICAL DATA

### Flow Rates

1 GPM (3.8 LPM) bottle fill  
4 GPM (15.2 LPM) bucket fill

### Back Flow Prevention

Flex-Gap or Aire-Gap

### Max. Water Temperature

140° F (60° C)

### Optimal Min. Pressure

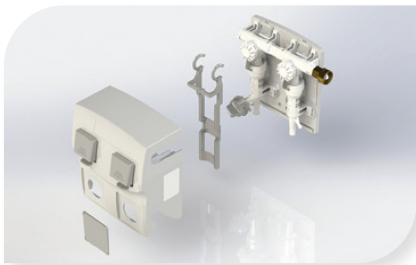
30 PSI (2 bar)

### Optimal Max. Pressure

60 PSI (4 bar)

### Certifications

A.S.S.E.  
I.A.P.M.O. (UPC)



## VALVE ASSEMBLY

Model Numbers		Description
<b>FLEX-GAP</b>	<b>AIRE-GAP</b>	
7866104-F	7866104-A	MX Plus, 1 Product Bucket Fill 4 GPM
7866501-F	7866501-A	MX Plus Proportioner, 5-Product 1 GPM & 4 GPM
7866802-F	7866802-A	MX Plus Proportioner, 8-Product 1 GPM & 4 GPM
7866101-F	7866101-A	MX Plus, 1 Product Bottle Fill 1 GPM
7866401-F	7866401-A	MX Plus Proportioner, 4-Product Bottle Fill, 1 GPM
<b>OPTIONS</b>		
7561000	Assembly, Sani-Select without Hose Accessory Kit	
7114100	Faucet Plus Kit Knight Chem Proport	

## ACCESSORY KITS

Model #	Description
6400006	Metering Tip Wrench
7366041-25	Quick Water Connection, Hose Swivel-US, 25 each
7366040-25	Quick Water Connection, Hose Swivel-UK, 25 each
0600873-10	Quick Water Connection, 3/8" John Guest Elbow, 10 each
0600874-10	Quick Water Connection, 3/8" Compression, 10 each
7366035	Quick Connect, 1/2" Barb, 25 each
7366049	Quick Connect, Valve Connector (join dispenser together)

### Features

- One hand bottle fill
- Large, ergonomic buttons
- Easy slide lock and release catch for buttons
- Built-in Flow-Control technology for accurate dilution in varying water pressures
- Snap On/Off cover
- Included tip kit and poly tubing, foot valves and product labels
- Optional compression, John Guest, or barb fittings available

**KNIGHT**  
CFS TECHNOLOGIES

### FOR MORE INFORMATION

(800) 999-2820  
sales@cfstech.com

knightequip.com  
cfstech.com