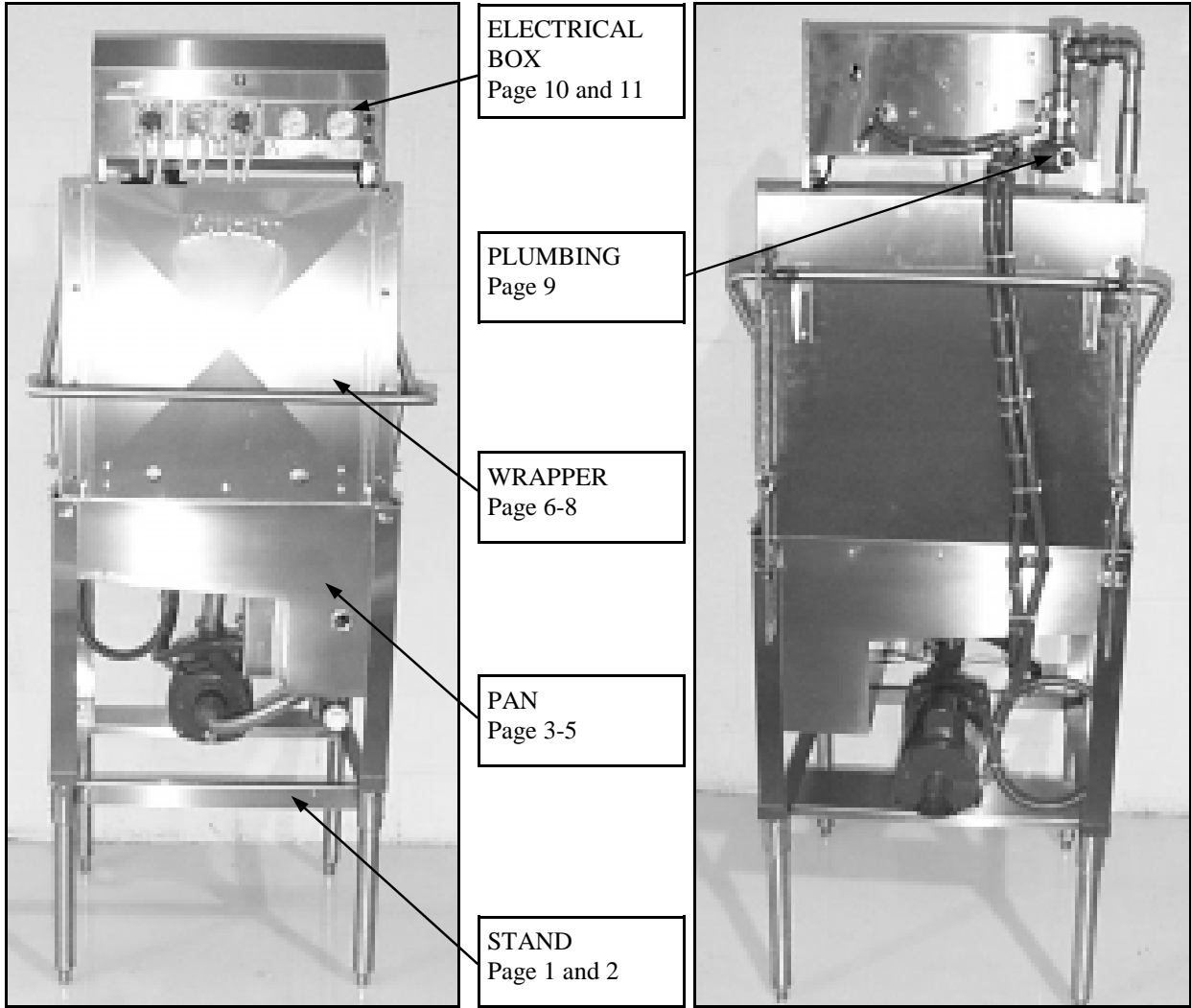


KNIGHT

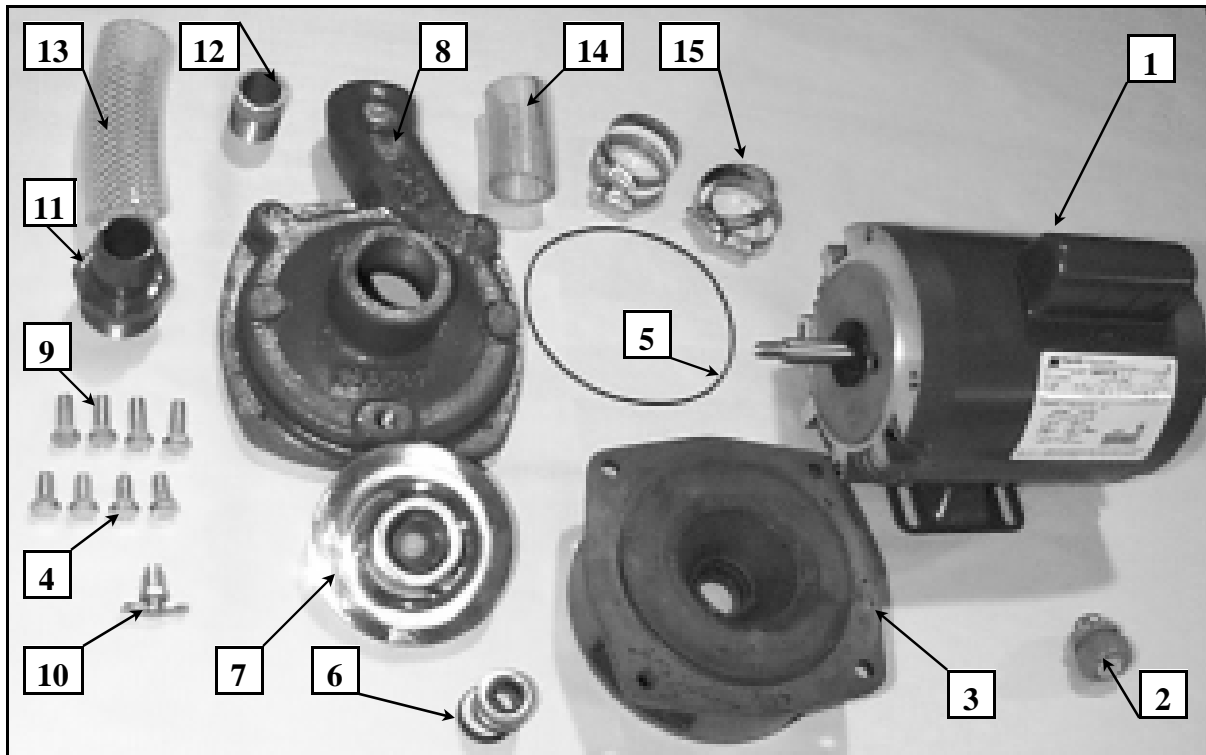
Dishmachine Division

Please call for pricing 1-800-241-7789 or 1-800-854-3764



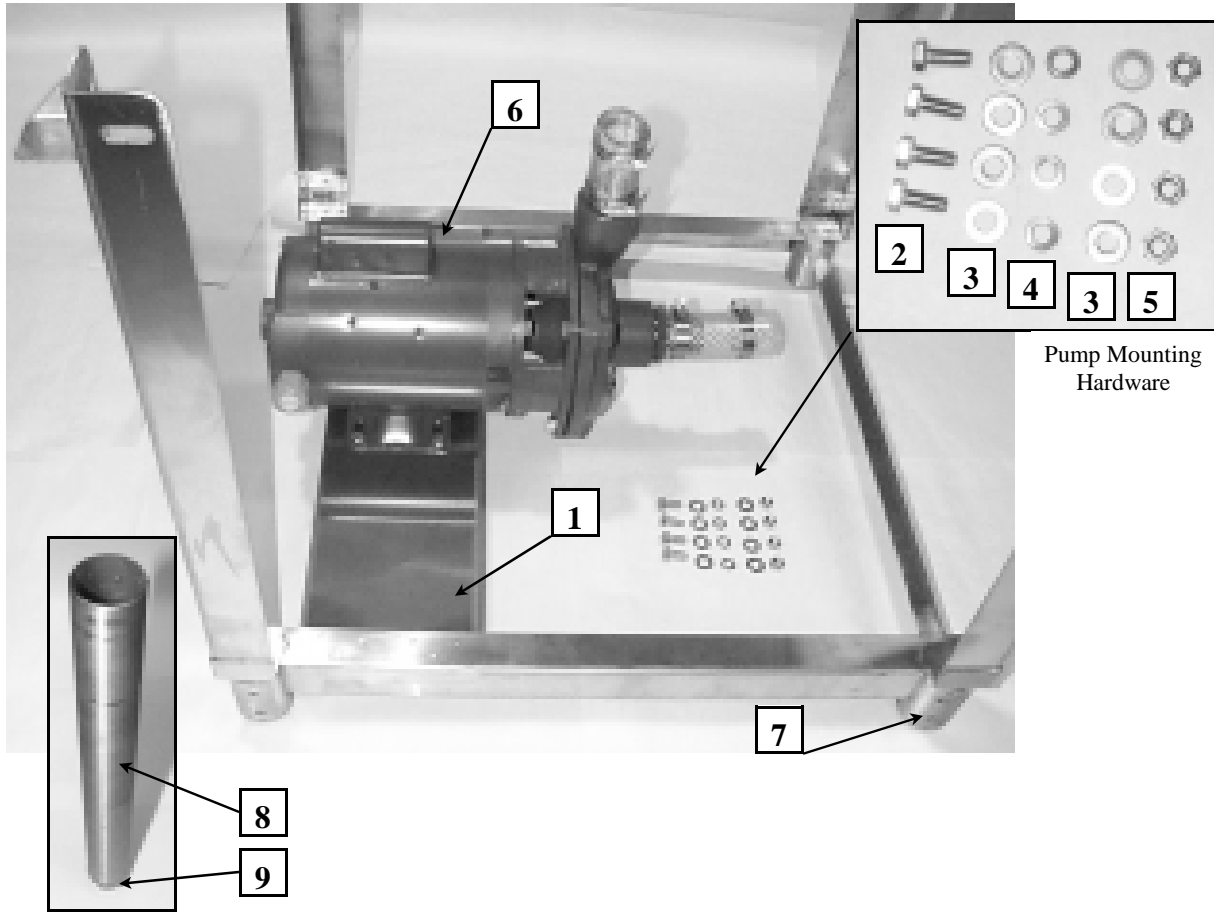
KLE-112-HL Convertible Dishwashing Machine





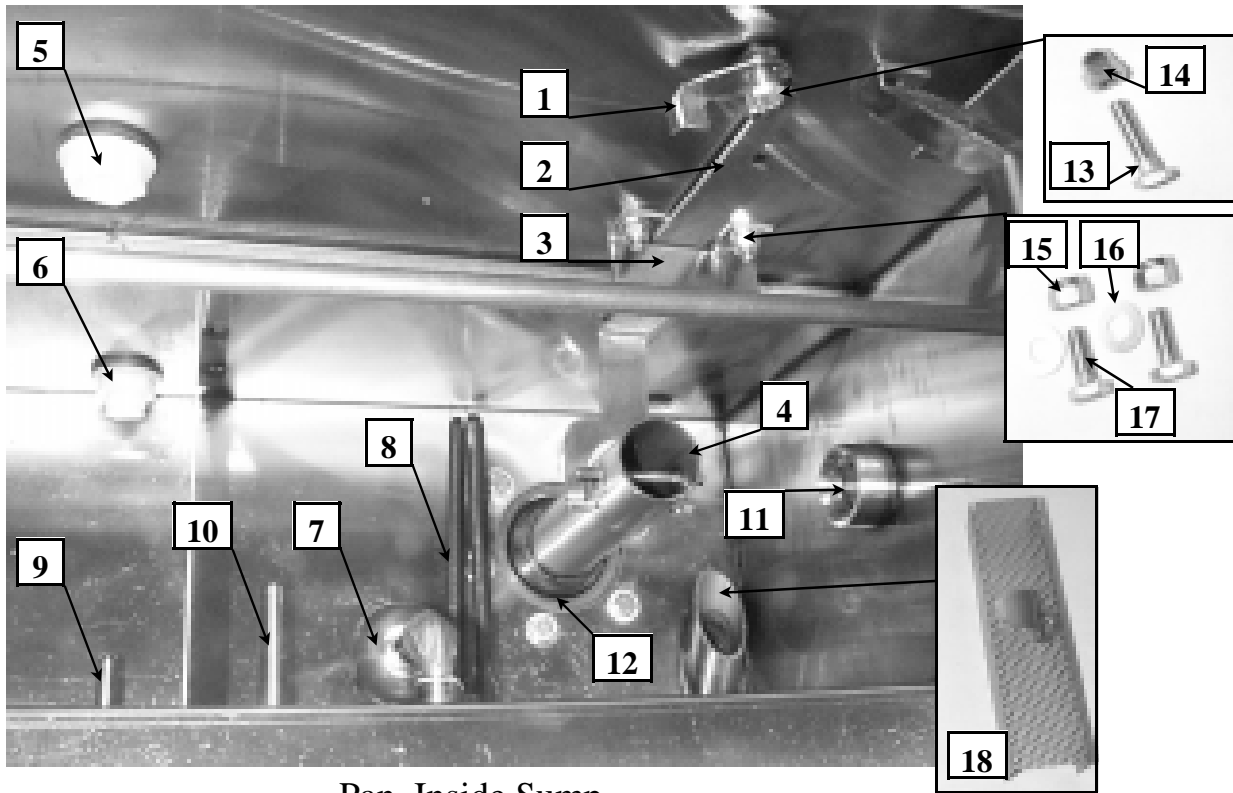
Pump Assembly (Part No. 9601600-03 240 VAC 50/60 Hz)

ITEM	PART No.	DESCRIPTION	QTY	LIST PRICE
1	9600007	PUMP MOTOR 1 HP 240 VAC 50/60 Hz	1	
2	9600790	1/2" STRAIGHT FLEX CONNECTOR	1	
3	9600742	PUMP BASE	1	
4	0200252	BOLT, HEX HEAD SS 3/8-16 X 3/4 LONG	4	
5	9600748	O-RING FOR PUMP ASSEMBLY	1	
6	9600745	PUMP SEAL KIT	1	
7	9600747-1	IMPELLER	1	
8	9600750	PUMP COVER	1	
9	0200253	BOLT, HEX HEAD SS 3/8-16 X 1 LONG	4	
10	9600478	PET COCK 1/4" MPT	1	
11	9600846	FITTING ADAPTER 1-1/2 MPT X 1-1/4 INS	1	
12	9601605	PUMP DISCHARGE NIPPLE 1" MPT	1	
13	9602120	TUBE 1.25 RVT 4" CUT	1	
14	9602121	TUBE 1.25 RVT 3.5" CUT	1	
15	9600158	WORM GEAR CLAMP 2"	4	



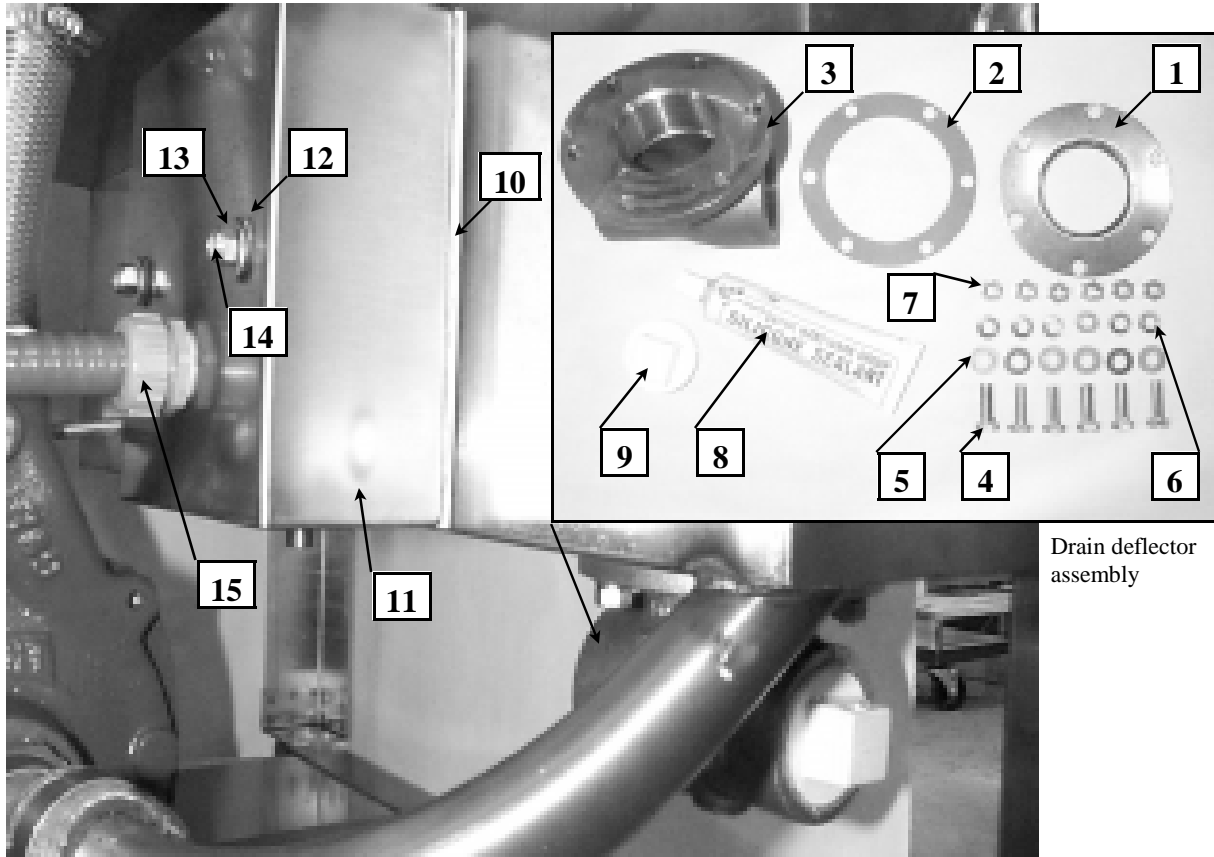
Stand Assembly

ITEM	PART No.	DESCRIPTION	QTY	LIST PRICE
1	9602140	STAND ASSEMBLY	1	
2	9600756	BOLT, HEX HEAD SS 5/16-18 X 3/4 LONG	4	
3	9600430	FLAT WASHER 5/16	8	
4	9600460	WASHER, SPLIT LOCK SS 5/16	4	
5	9600889	NUTS, 5/16-18	4	
6	9601600-03	PUMP ASSEMBLY	1	
7	No part No.	ALLEN HEAD SET SCREW 5/16-24 x 3/8 LONG	8	
8	9602111	LEG EXTENSION 10.625" LONG	4	
9	9600758	BULLET FOOT	4	



Pan, Inside Sump

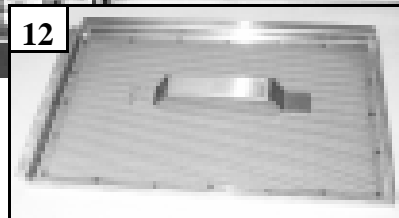
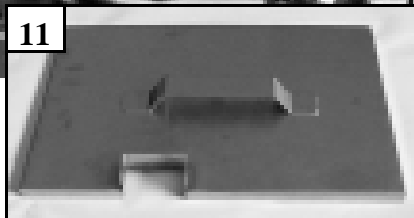
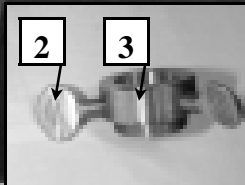
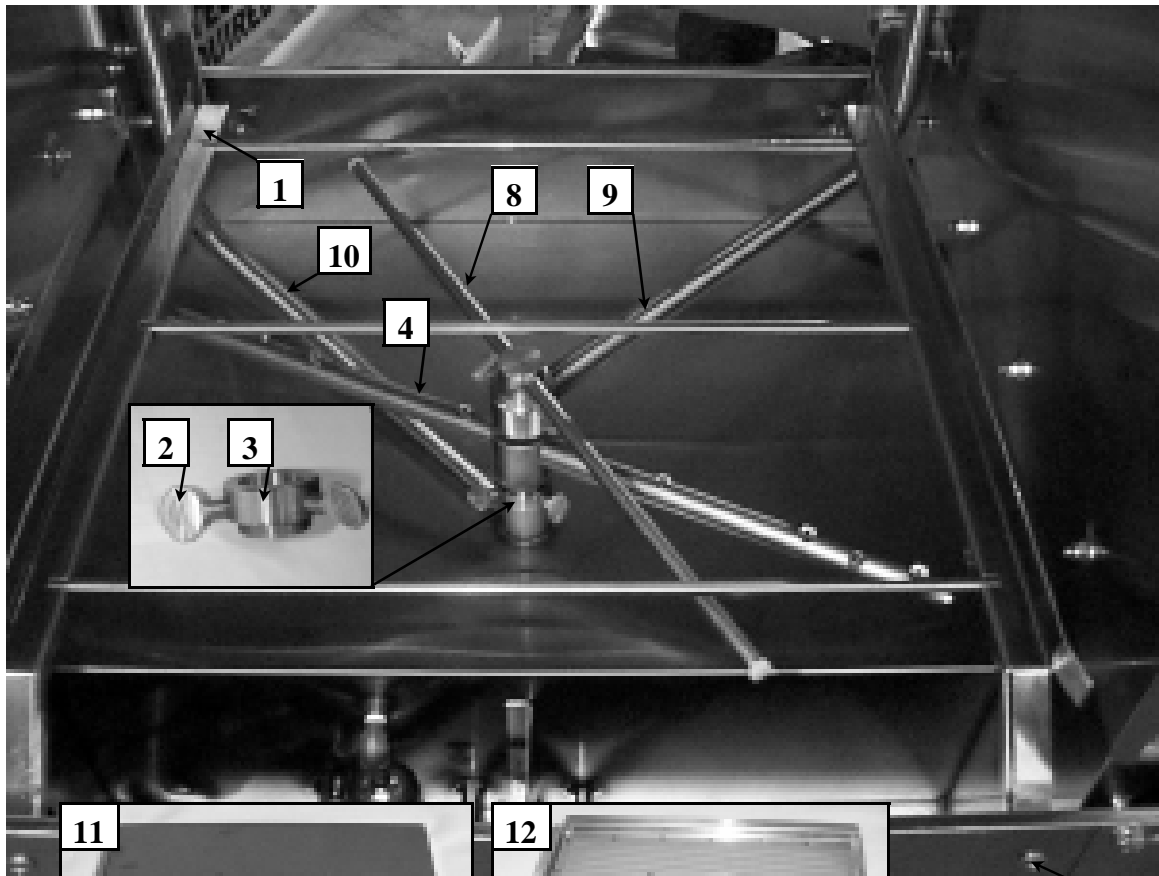
ITEM	PART No.	DESCRIPTION	QTY	LIST PRICE
1	9661502	DRAIN BALL LIFTING ARM	1	
2	9661504	DRAIN BALL LIFTING BRACKET	1	
3	9661505	GUIDE, DRAIN BALL LIFTING ARM	1	
4	9602122	DRAIN BALL ASSEMBLY	1	
5	7023342	FITTING BULKHEAD ELL	1	
6	7132281	HP-50 7/8" HOLE PLUG	1	
7	9602135	FLOAT SWITCH	1	
8	9602134	HEATING ELEMENT 3KW	1	
9	9601996	TEMPERATURE GAGE (LONG CABLE)	1	
10	9602136	THERMOSWITCH 1/2 MPT	1	
11	9602137	SIGHT LENS	1	
12	9600584	O-RING DRAIN BALL (NOT VISIBLE)	1	
13	9600833	BOLT, HEX HEAD SS 1/4-20 X 1" LONG	1	
14	9600437	NUT, ACORN 1/4-20	1	
15	1400462	NUT, 1/4-20 SS W/NYLOCK	2	
16	9600421	WASHER, BRASS .25 I.D. X .562 O.D.	2	
17	9600834	BOLT, HEX HEAD SS 1/4-20 X 5/8" LONG	2	
18	9602132	SUMP SCREEN ASSEMBLY	1	



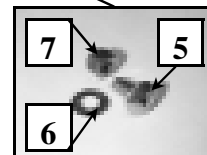
Drain deflector assembly

Pan Bottom Side, Electrical Enclosure and Drain Deflector

ITEM	PART No.	DESCRIPTION	QTY	LIST PRICE
1	9600285	S.S. DRAIN SEAT	1	
2	9600777-1	GASKET, DRAIN TEE	1	
3	9603003-01	FITTING, DRAIN TEE	1	
4	9600746	BOLT, HEX HEAD 5/16-18 X 1" LONG	6	
5	9600430	WASHER, FLAT 5/16" S.S.	6	
6	9600460	WASHER, SPLIT LOCK S.S. 5/16	6	
7	9600889	NUT 5/16-18 S.S.	6	
8	No Part No.	FOOD GRADE SILICONE SEALANT	as needed	
9	9600779	PIPE PLUG 1-1/2 MPT PVC	1	
10	9602141	NEOPRENE GASKET	1	
11	9602143	COVER CONDUIT BOX (sump area)	1	
12	9600473	WASHER, NEOPRENE	2	
13	9600781	WASHER, FLAT 1/4 S.S.	2	
14	1400462	NUT 1/4-20 S.S. W/NYLOCK	2	
15	9600790	1/2" STRAIGHT FLEX CONNECTOR	1	

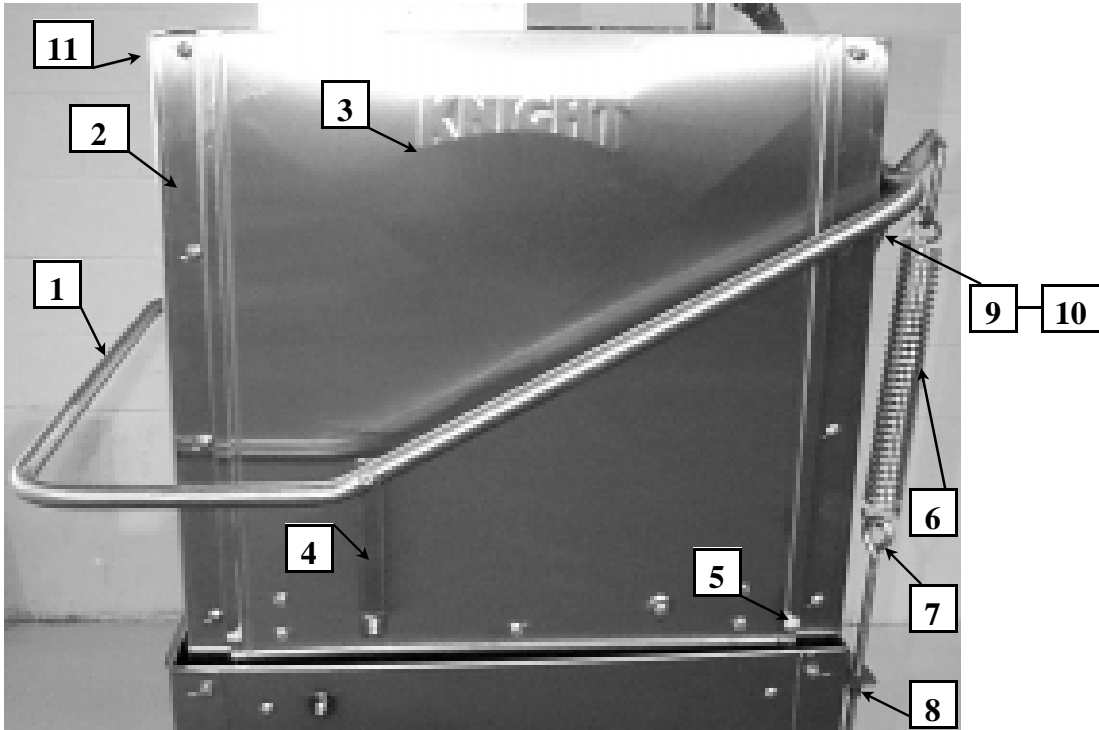


Tray rail hardware



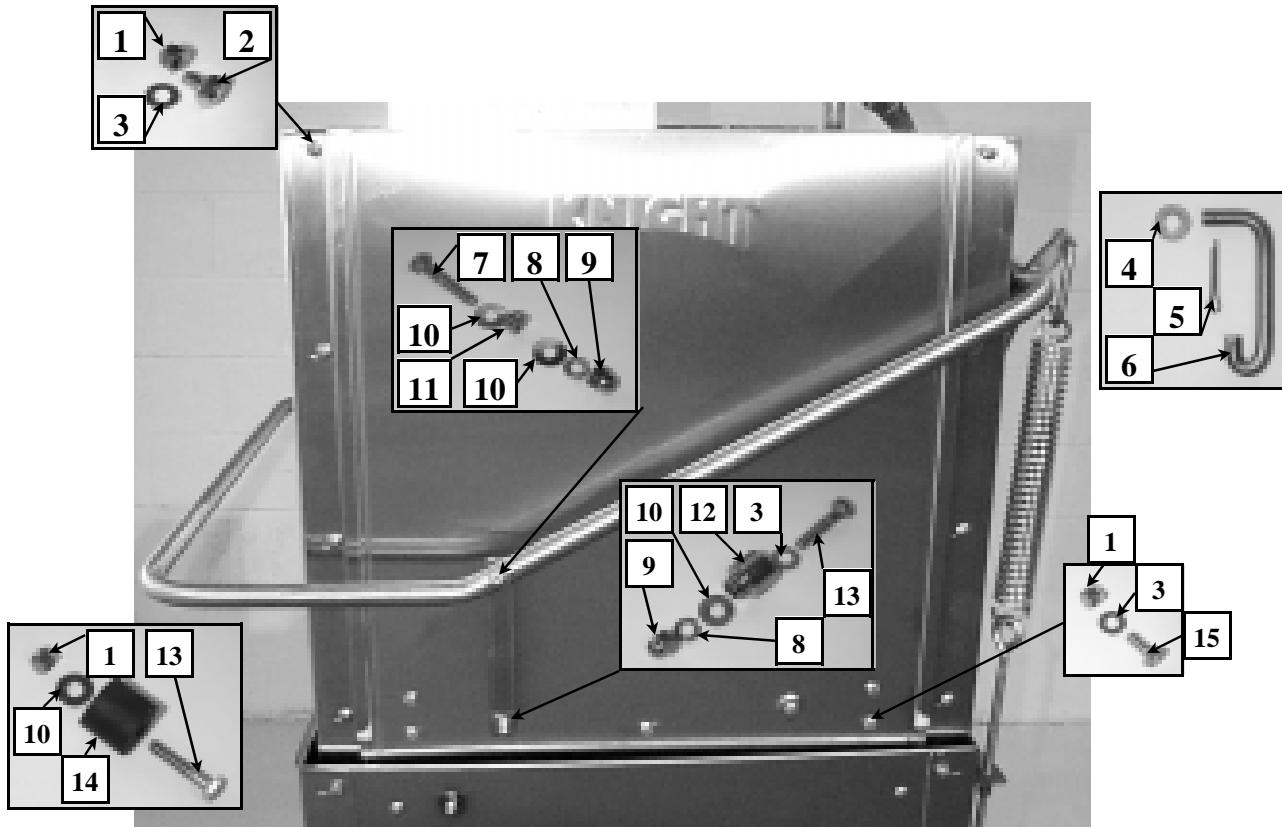
Pan Inside

ITEM	PART No.	DESCRIPTION	QTY	LIST PRICE
1	9602148	TRAY RAIL ASSEMBLY	1	
2	9600431	SCREW, THUMB, S.S. 5/16-18 X 1/2" LONG	4	
3	9600203	SPRAY BASE ADAPTER	1	
4	9600215	SPRAY ARM ASSEMBLY	1	
5	9600834	BOLT, TRUSS HEAD S.S. 1/4-20 X 5/8" LONG	4	
6	9600421	WASHER, BRASS .25 I.D. X .562 O.D.	4	
7	1400462	NUT, 1/4-20 S.S. W/NYLOCK	4	
8	9602128	RINSE ARM LOWER	1	
9	9602118	ASSEMBLY, MANIFOLD LOWER	1	
10	9602119	MANIFOLD WASH	1	
11	9660701	SOLID TRAY ASSEMBLY WITH HANDLE	1	
12	9660703	PERFORATED TRAY WITH HANDLE	1	



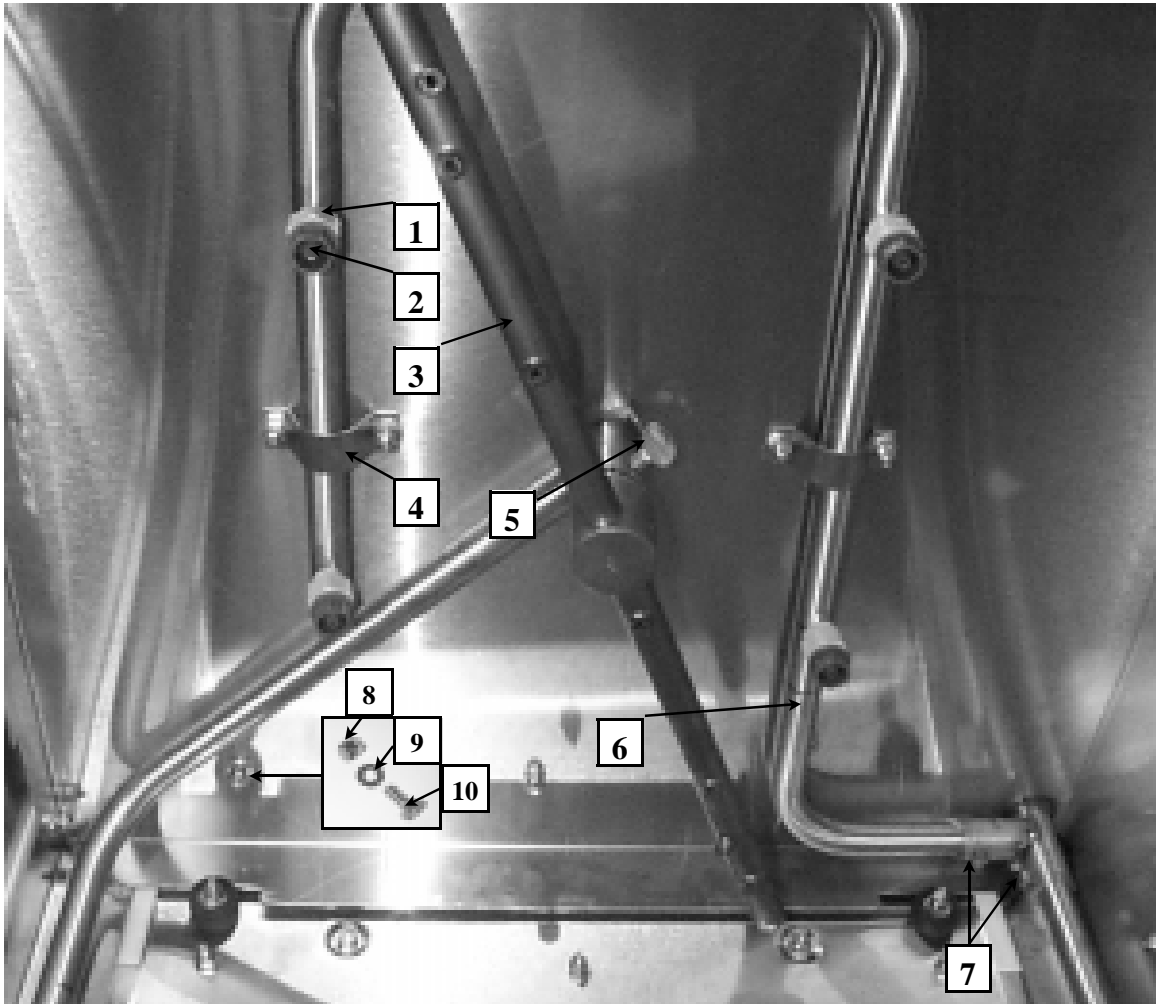
Wrapper Side (main components)

ITEM	PART No.	DESCRIPTION	QTY	LIST PRICE
1	9661303	DOOR HANDLE ASSEMBLY	1	
2	9600609	DOOR GUIDE S.S.	6	
3	9601709	DOOR ASSEMBLY RGHT, LFT, FNT	3	
4	9600741	DOOR LINK	2	
5	9600465-22	DOOR STRIP 22" LONG	6	
6	9600416	SPRING DOOR	2	
7	9603077	EYE BOLT 3/8-16 X 12"LONG	2	
8	1400415	NUT 3/8-16	4	
9	9600738	HANDLE SUPPORT ASSY. RIGHT (looking at machine front)	1	
10	9600443	HANDLE SUPPORT ASSY. LEFT (looking at machine front)	1	
11	9602104	WRAPPER WELD ASSEMBLY	1	



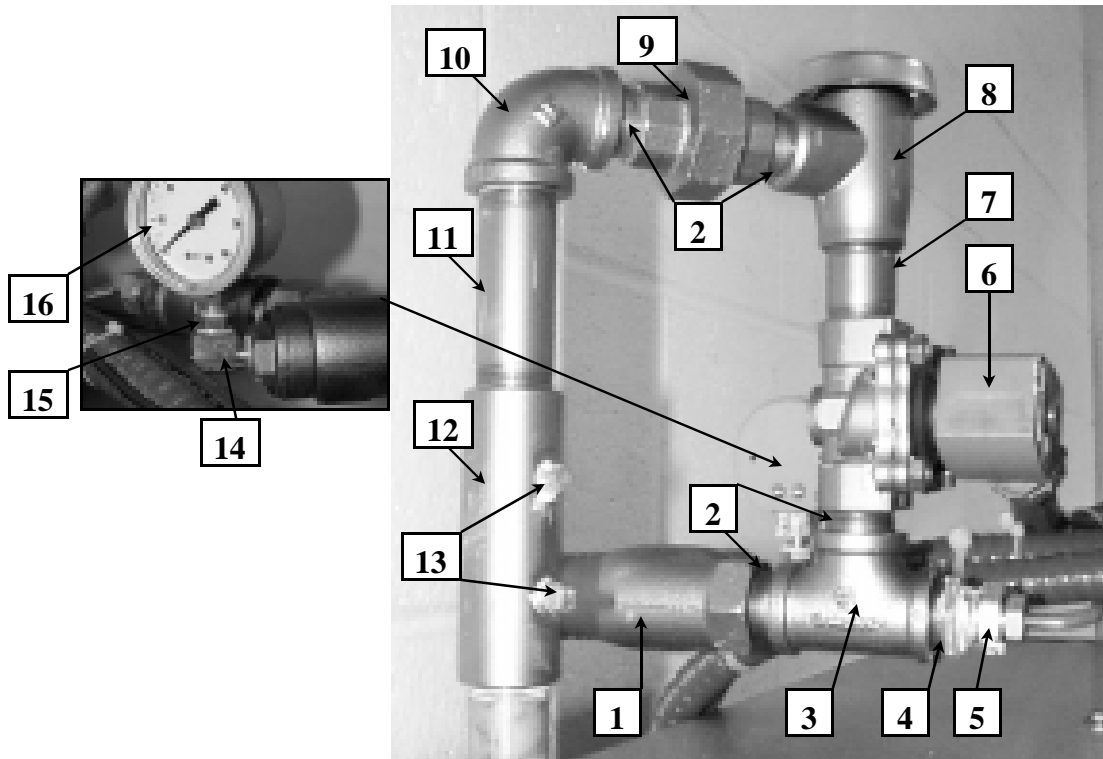
Wrapper Side (hardware)

ITEM	PART No.	DESCRIPTION	QTY	LIST PRICE
1	1400462	NUT, 1/4-20 SS W/NYLOCK	See picture	
2	9600834	BOLT, TRUSS HEAD SS 1/4-20 X 5/8" LONG	See picture	
3	9600421	WASHER BRASS .25 I.D. X .562 O.D.	See picture	
4	9600430	FLAT WASHER 5/16 S.S.	See picture	
5	9600419	COTTER PIN	See picture	
6	9600739	EXTENSION ROD	See picture	
7	9600436	BOLT, HEX HEAD S.S. 1/4-20 X 1-1/2" LONG	See picture	
8	9600774	WASHER, SPLIT LOCK S.S. 1/4"	See picture	
9	9600437	NUT, ACORN 1/4-20 S.S.	See picture	
10	9600781	FLAT WASHER 1/4 S.S.	See picture	
11	9600819	SPACER BUSHING 1/4" LONG S.S.	See picture	
12	9600843	DOOR PIVOT	See picture	
13	9600641	BOLT HEX HEAD S.S. 1/4-20 X 1-1/4" LONG	See picture	
14	9640903	DOOR STOP NEOPRENE .75" LONG	See picture	
15	9600835	BOLT, HEX HEAD S.S. 1/4-20 X 5/8" LONG	See picture	



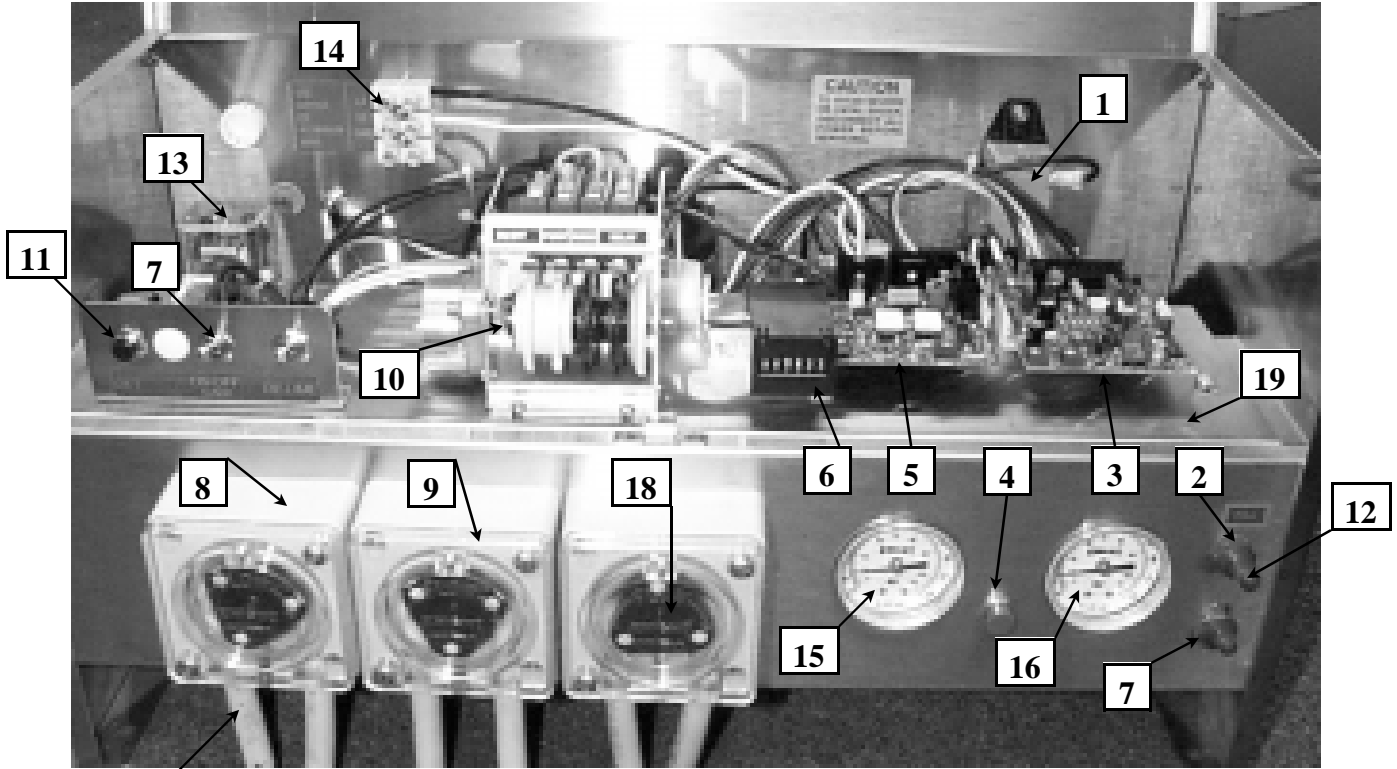
Wrapper Inside

ITEM	PART No.	DESCRIPTION	QTY	LIST PRICE
1	9602109	SPRAY JET BASE 1/8 MPT	4	
2	9602110	SPRAY JET GREEN	4	
3	9600215	SPRAY ARM ASSEMBLY	1	
4	9603057	PLUMBING CLAMP 1/2"	4	
5	9600431	SCREW, THUMB, S.S. 5/16-18 X 1/2" LONG	1	
6	9602116	MANIFOLD, UPPER RINSE	1	
7	1900577	BOLT, SQUARE HEAD, S.S. 5/16-18 X 1/4" LONG	2	
8	1400462	NUT, 1/4-20 S.S. W/NYLOCK	8	
9	9600421	WASHER, BRASS .25 I.D. X .562 O.D.	8	
10	9600835	BOLT, HEX HEAD, S.S. 1/4-20 X 5/8" LONG	8	



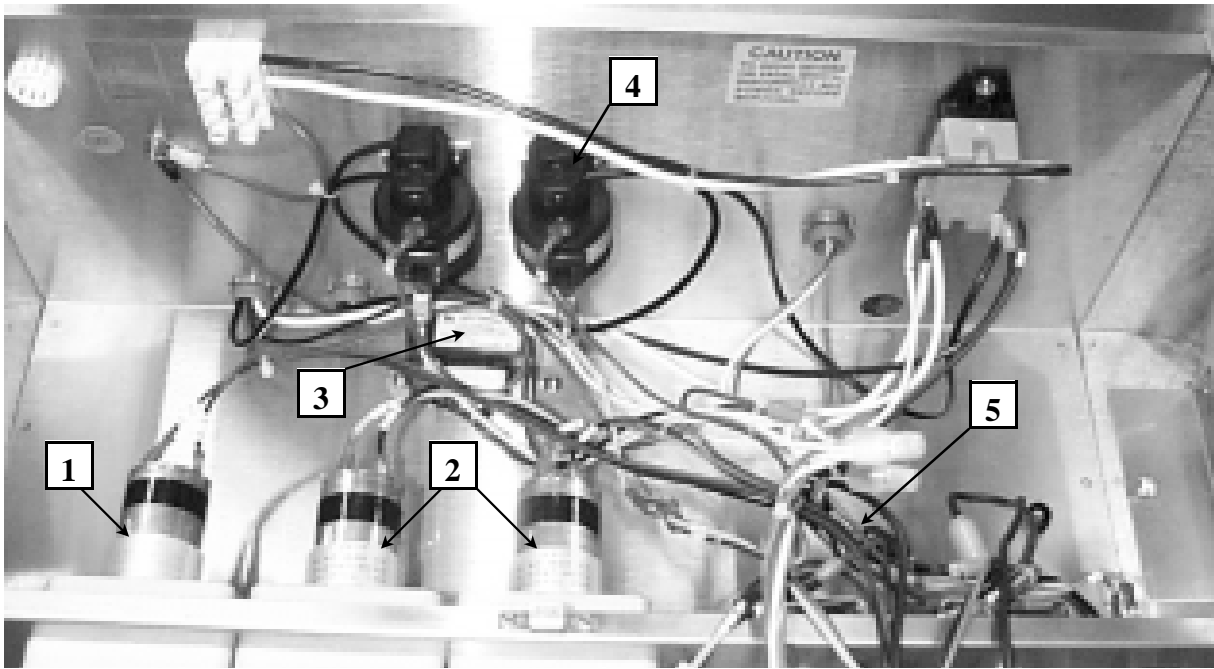
Plumbing Assembly (Part No. 9660513 240 VAC 50/60 Hz)

ITEM	PART No.	DESCRIPTION	QTY	LIST PRICE
1	9600410	Y-STRAINER 3/4" NPT	1	
2	9603037	PIPE NIPPLE 3/4" CLOSED	4	
3	9501410	TEE 3/4" NPT	1	
4	9501554	BUSHING 3/4" X 1/2"	1	
5	9601995	TEMPERATURE GAGE	1	
6	9600403-02	SOLENOID VALVE 3/4" NPT	1	
7	9603037	PIPE NIPPLE 3/4" X 2" LONG	1	
8	9600765-B	VACUUM BREAKER 3/4" NPT	1	
9	9501417	UNION 3/4" NPT	1	
10	9600771	ELBOW 90 deg. 3/4" NPT	1	
11	9601371	PIPE NIPPLE 3/4" X 3-1/2" LONG	1	
12	9640512	INJECTOR MANIFOLD 3/4" NPT	1	
13	1600322	PIPE PLUGS 1/8" NPT	2	
14	0200056	STREET ELBOW 1/4" NPT	1	
15	0200100	BUSHING 1/4 X 1/8 NPT	1	
16	9640511	PRESSURE GAGE 1/8 NPT	1	



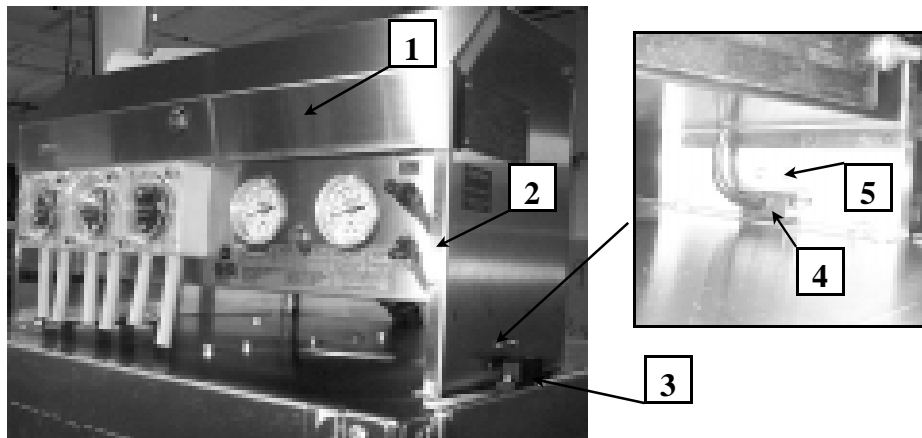
17 Electrical Box Assembly (Part No. 9602164-02 240 VAC 50/60 Hz)

ITEM	PART No.	DESCRIPTION	QTY	LIST PRICE
1	9600483	SWITCH MASTER 30 AMP	1	
2	1900909	SWITCH MOMENTARY	1	
3	7142270	C.B. ASSEMBLY PL-1000	1	
4	9640927	LAMP, GREEN 24VDC	1	
5	7142225-1	C.B. ASSY DSC-1000	1	
6	7032433	RACK COUNTER 240 VAC 50-60 Hz	1	
7	7507400	TOGGLE SWITCH	3	
8	7501311	KP-500A PUMP BODY ONLY	3	
9	7502312	KP-500 FACE PLATE ONLY (CLEAR)	3	
10	9620100-02	CAM TIMER 220/60	1	
11	9600837	PRIME SWITCH 10 AMP	1	
12	9600578	RUBBER BOOT FOR TOGGLE SWITCH	2	
13	9600110	CUBED RELAY 220VAC 50-60 Hz	1	
14	0200500	BARRIER 3 POSITION	1	
15	9601996	TEMPERATURE GAGE (TO PAN)	1	
16	9601995	TEMPERATURE GAGE (TO RINSE WATER)	1	
17	7018096	T-53T THERMISTANT SQUEEZE TUBE	3	
18	7503453	3-LOBE ROLLER ASSEMBLY	3	
19	9602173	SHIELD CONTROL BOX. (S.S. BASE ONLY)	1	



Electrical Box inside

ITEM	PART No.	DESCRIPTION	QTY	LIST PRICE
1	7010211	MTR/CAP ASSY, 100 RPM 24VDC PUMP MOTOR	1	
2	7010216	MTR/CAP ASSY, 15 RPM 24VDC PUMP MOTOR	2	
3	2000575	TRANSFORMER TR-3040 , 40VA	1	
4	9600108	MERCURY RELAY 220VAC 50/60 Hz	2	
5	0600310	FUSE, .25 AMP/250V 1/4 X 1-1/4 FAST ACTING	1	



Electrical Box outside

ITEM	PART No.	DESCRIPTION	QTY	LIST PRICE
1	9602174	COVER CONTROL BOX S.S. PART ONLY	1	
2	9602166	CONTROL BOX WELD ASSEMBLY S.S. PART ONLY	1	
3	9601317-M	REED SWITCH MAGNET ONLY	1	
4	9601321-1	REED SWITCH WITH MAGNET 220V, 1A, 100VA	1	
5	9640921	REED SWITCH MAGNET BRACKET	1	