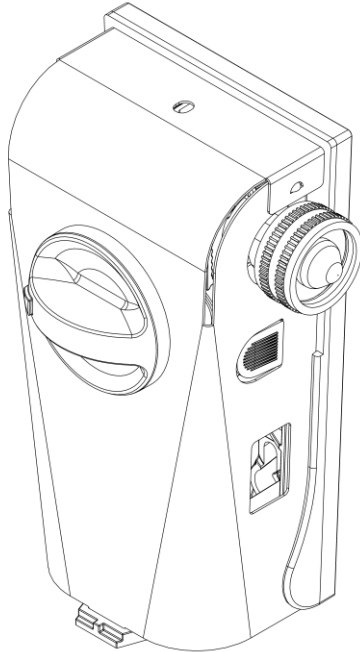
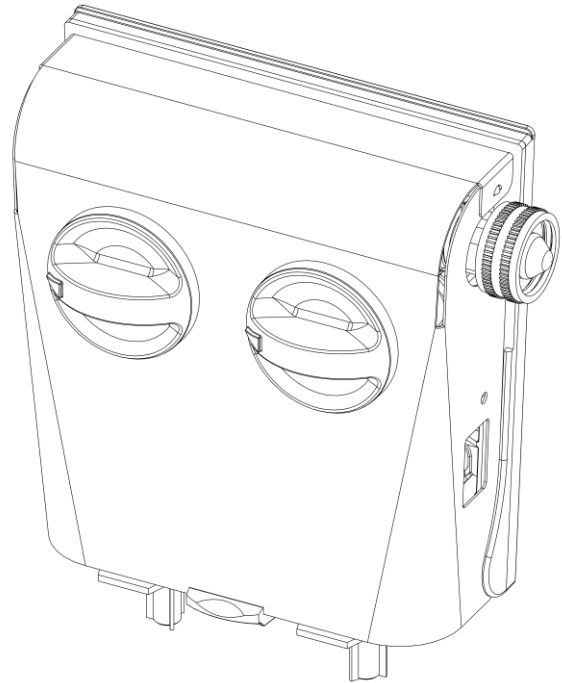


# SSINK

## Sink Chemical Dispensing System



**Super Sink Single**



**Super Sink Dual**

### Installation and Setup Guide

SuperSink accurately blends proportioned chemical with water for cleaning, sanitizing or other related needs in a commercial kitchen. The dispensing system uses a pilot driven water valve designed for easy maintenance. SuperSink is engineered with 1055 approved back flow protect using DEMA's Air Gap or Action Gap proportioning system.

### Warnings



All installations must conform to local plumbing codes and use approved backflow prevention devices. A pressure indicating tee is to be installed with existing faucets according to local plumbing codes in the state of Wisconsin and any other state that requires the use of a pressure indicating tee.



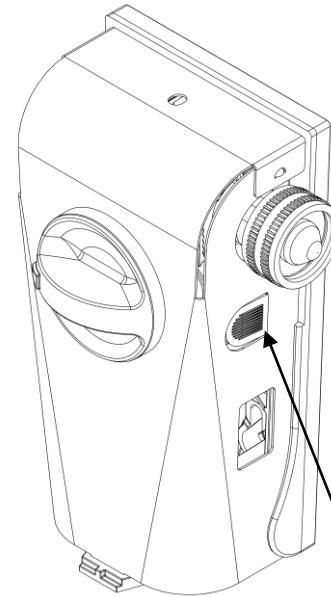
**ALWAYS WEAR PROTECTIVE CLOTHING AND EYEWEAR WHEN WORKING WITH CHEMICAL PRODUCTS.**

# Installation (Super Sink Single)

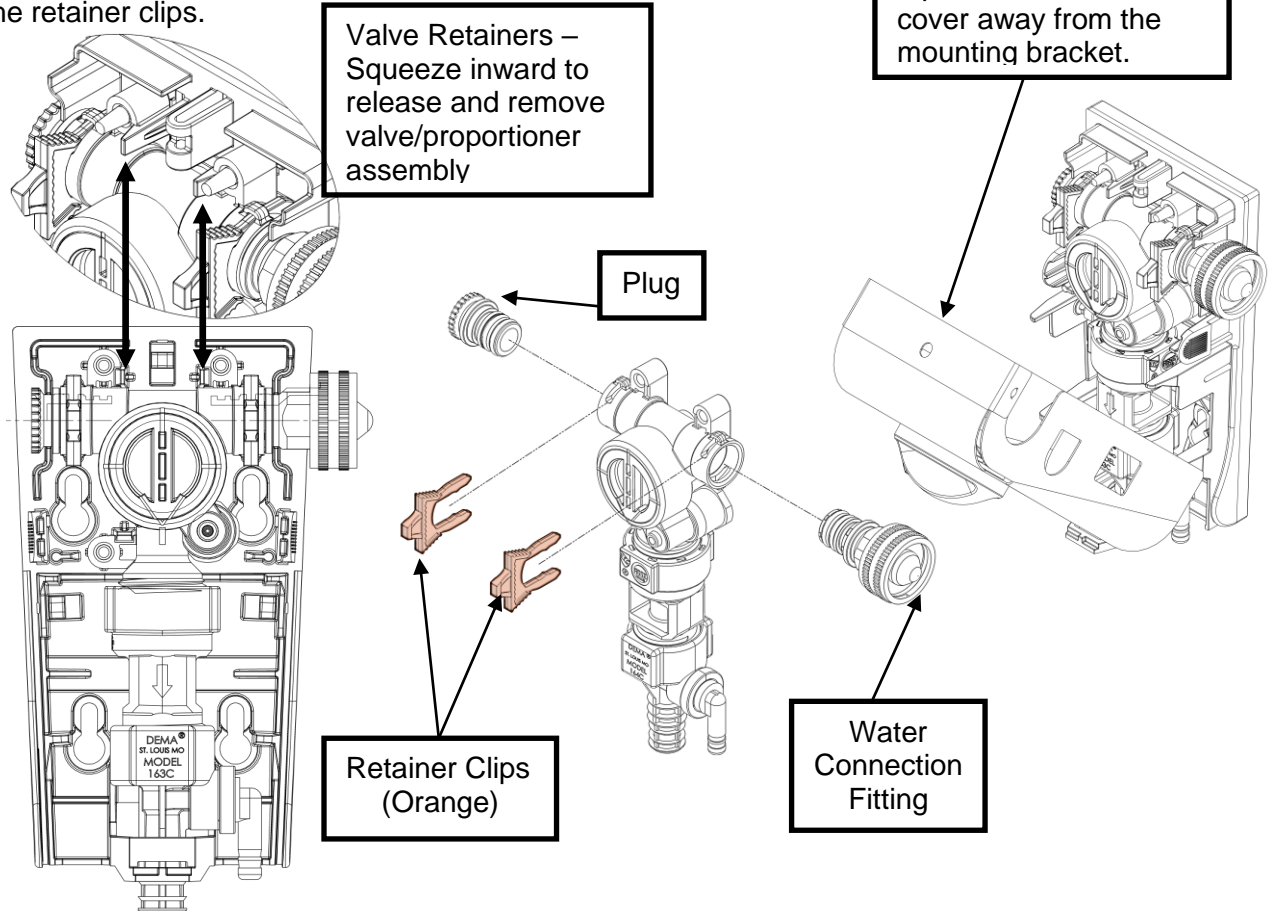


**WARNING: INSTALLATION OF DEMA PRODUCTS MUST MEET ALL APPLICABLE PLUMBING CODES AND REGULATIONS ESTABLISHED BY NATIONAL, CITY, COUNTY, PARISH, PROVINCIAL OR OTHER AGENCIES. IT IS POSSIBLE THAT PLUMBING CODES AND REGULATIONS REQUIRE THAT A CERTIFIED INSTALLATION CONTRACTOR OR ENGINEER PERFORM THE PLUMBING INSTALLATION.**

1. Locate where to install the SuperSink Dispenser.  
Keep the following in mind
  - a. Mount near or over the sink
  - b. Mount so that discharge hoses will be above the water line
  - c. Best access to water hookup.
2. Remove the SuperSink cover by pressing the black plastic tabs on each side and swing top away from the mounting bracket.
3. Determine if the water supply connection should be on the right or left hand side of the dispenser.
  - a. The entire valve and proportioner assembly can be removed from the mounting bracket (see illustration on this page).
  - b. The water supply connection can be moved to either side by removing the plastic, orange retainer clips, the plug and the water connection fitting. Then replace the retainer clips.



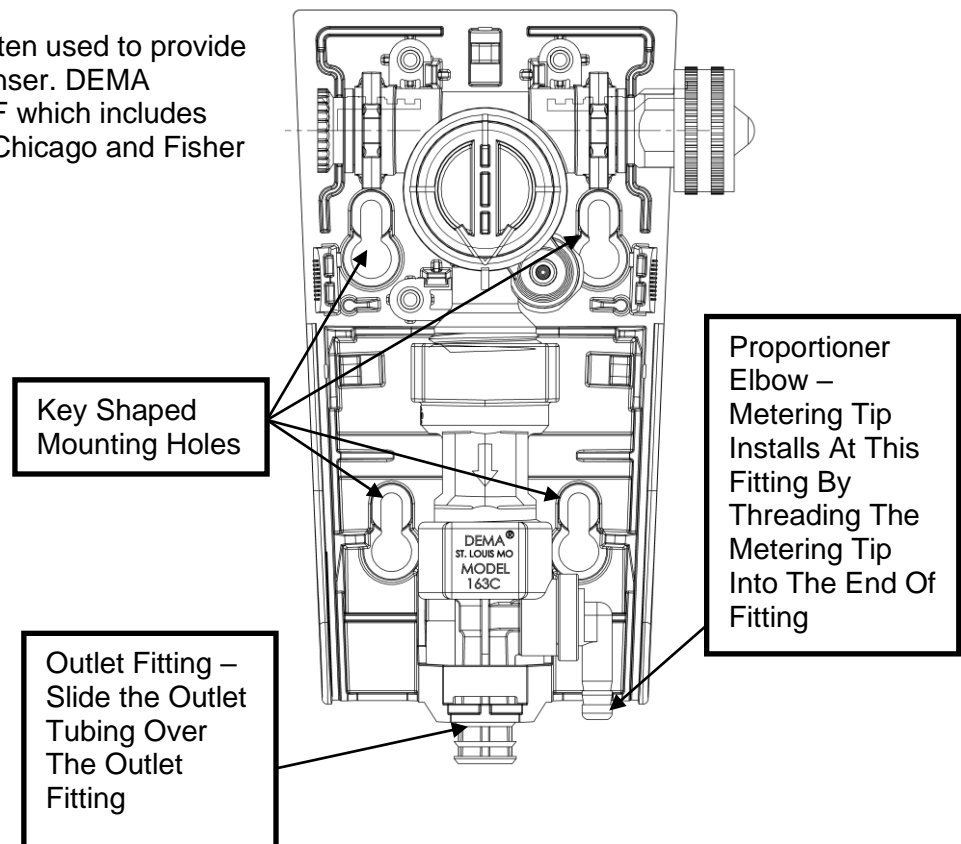
Press in black tabs on each side and swing top of stainless steel cover away from the mounting bracket.



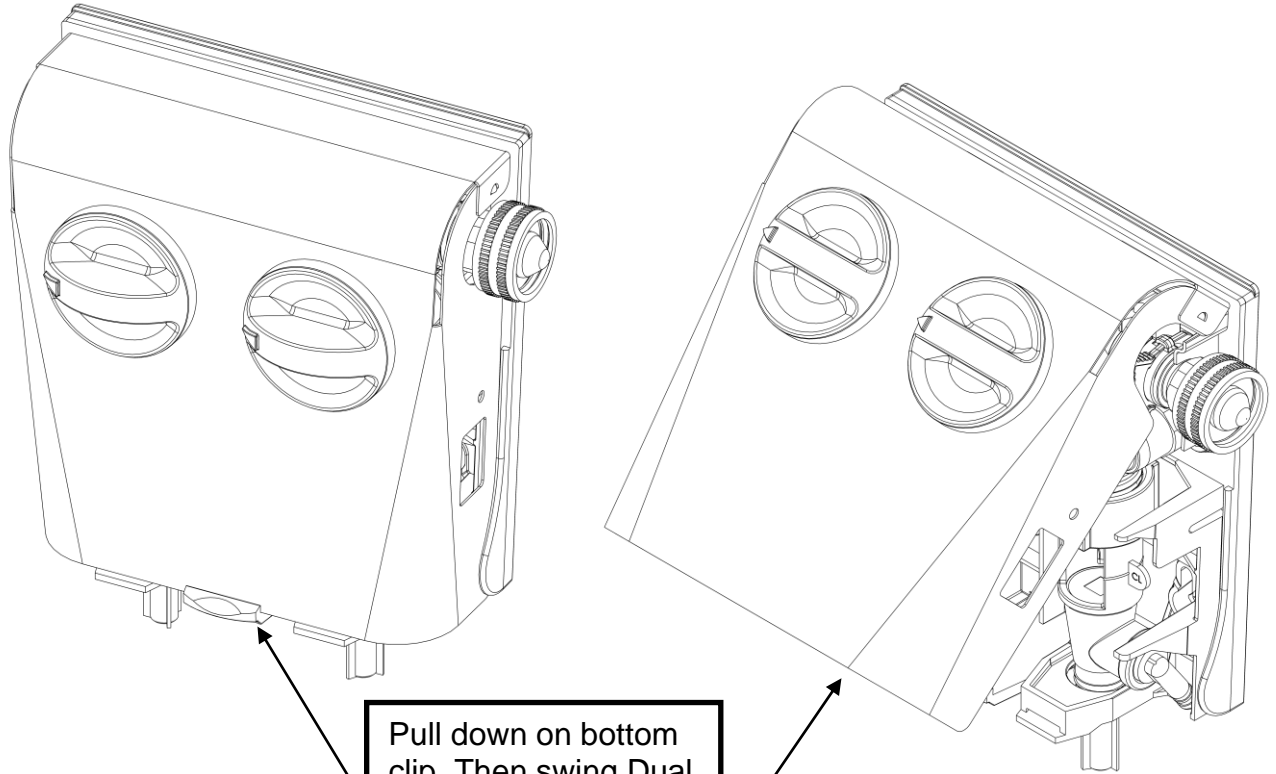
## Installation (Super Sink Single) Continued...

4. Locate the key shaped mounting holes in the back plate. Mount the SuperSink using the mounting screws and anchors that are included in the installation kit.
5. Install the desired metering tip by threading tip into the proportioner chemical pick-up elbow.
6. Cut the chemical supply tube to the length allows the foot valve to rest on the bottom of the chemical container. Slide the ceramic weight onto the chemical supply tube until it is against the foot valve. This will keep the foot valve at the bottom of the chemical container.
  - a. Note: Chemical containers cannot be greater than 6 feet (1.8M) below the SuperSink dispenser.
7. Cut the outlet tubing to the desired length. When using the system to fill sinks, it is recommended to cut the out let tubing so that it is above the intended fill line (water line).
8. Install the SuperSink cover by positioning the tab at the bottom of the cover near the dispenser discharge and push the cover back over the valve assembly until the tabs latch on both sides of the unit.
9. Connect the water line to the inlet of the SuperSink.
  - a. Note: The water pressure must be between 20psi and 95psi. Optimum chemical induction occurs between 30psi – 60psi.
  - b. The water inlet options for the SuperSink are:
    - i. Garden Hose (female)
    - ii. 3/8" Elbow Brass Compression Fitting (suitable for 3/8" OD soft copper water line)
    - iii. 3/8" Straight Brass Compression Fitting (suitable for 3/8" OD soft copper water line)
    - iv. 3/8" John Guest Push-on Water Fitting (suitable for 3/8" OD soft copper or LDPE tubing)
    - v. 3/8" Elbow John Guest Push-on Water Fitting (suitable for 3/8" OD soft copper or LDPE tubing)
    - vi. 3/8" Brass Barb Water Fitting (suitable for 3/8" LDPE tubing)

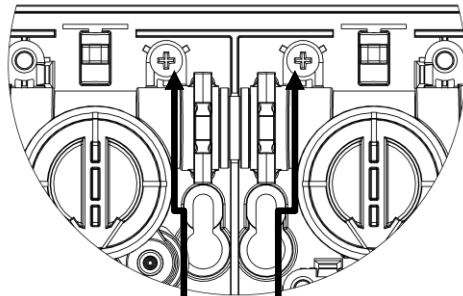
- b. Faucet adapter kits are often used to provide water source to the dispenser. DEMA recommend P/N 68.4 NSF which includes faucet adapters for T&S, Chicago and Fisher faucets.



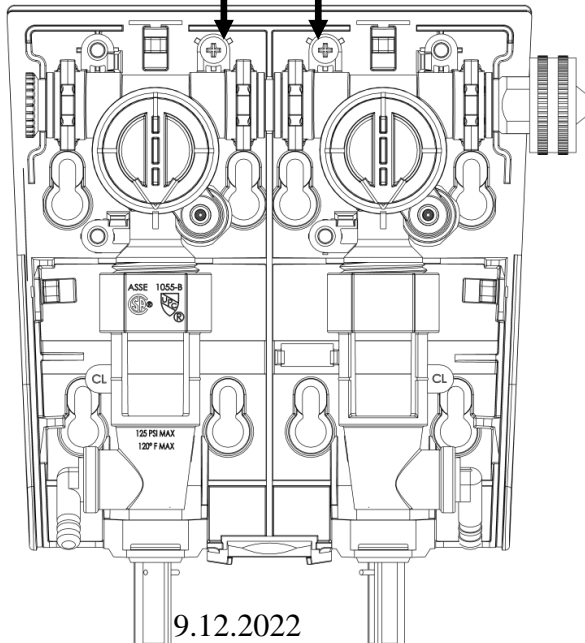
# Installation (Super Sink Dual)



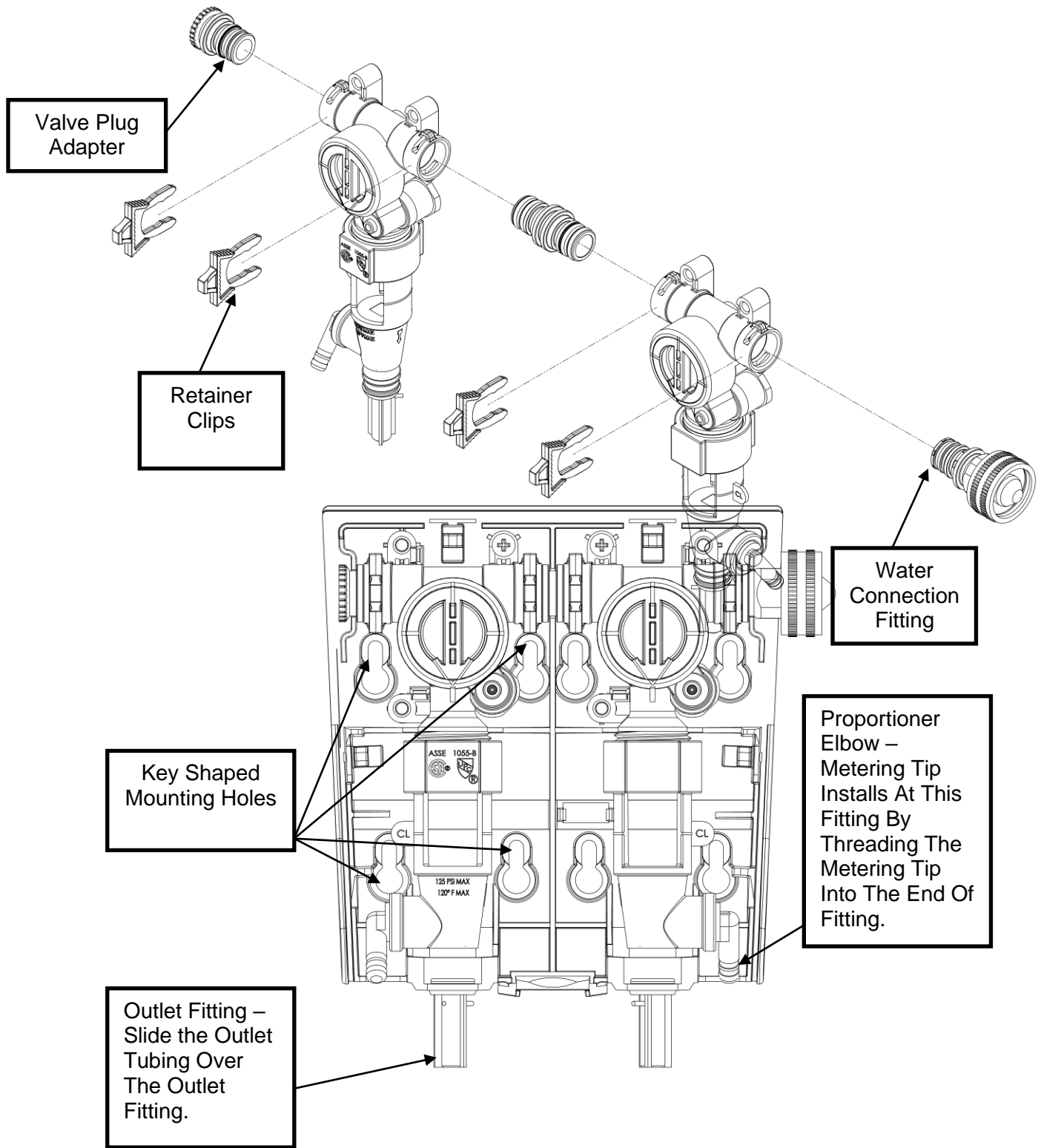
Pull down on bottom clip. Then swing Dual Super Sink cover up to remove from unit.



#8 HI-LOW SCREWS FOR VALVE(S) REMOVAL FROM BACK PLATE (DUAL SUPER SINK ONLY)



# Installation (Super Sink Dual) Continued...



## Metering Tip Kits

**Table 1: Fusion Metering Tips 100.15K (Provided)**

Metering Tip Color	1 GPM Air Gap Proportioner			4 GPM Air Gap Proportioner		
	Oz./gal	ml/L	Ratio : 1	Oz./gal	ml/L	Ratio : 1
Tan	1.37	10.57	93.65	0.37	2.91	343.19
Orange	1.67	12.91	76.48	0.44	3.45	289.14
Turquoise	1.74	13.44	73.43	0.49	3.83	260.27
Pink	3.45	26.28	37.06	0.92	7.12	139.38
Light Blue	4.47	33.73	28.65	1.10	8.49	116.74
Brown	5.04	37.87	25.41	1.40	10.80	91.62
Red	6.89	51.08	18.58	1.78	13.70	72.01
White	7.43	54.87	17.23	1.90	14.60	67.48
Green	7.46	55.06	17.16	1.98	15.26	64.53
Blue	9.14	66.63	14.01	2.54	19.44	50.45
Yellow	14.07	99.07	9.09	4.29	32.46	29.81
Black	17.36	119.45	7.37	4.53	34.19	28.25
Purple	31.36	196.81	4.08	7.67	56.53	16.69
Gray	34.95	214.51	3.66	8.77	64.15	14.59
No Tip	35.95	219.31	3.56	10.54	76.05	12.15

INDUCTION RATES BASED ON WATER THIN PRODUCTS (1 cps)  
INDUCTION RATES VARY PRODUCT TO PRODUCT. FIELD TESTS ARE RECOMMENDED.

**Table 2: Ultra Lean Metering Tips 100.15KU (Not Provided)**

Metering Tip Color	1 GPM Air Gap Proportioner			4 GPM Air Gap Proportioner		
	Oz./gal	ml/L	Ratio : 1	Oz./gal	ml/L	Ratio : 1
Copper	0.47	3.70	269.58	0.14	1.10	904.85
Pumpkin	0.75	5.80	171.35	0.22	1.71	585.42
Burgundy	0.87	6.75	147.10	0.25	1.98	503.37
Lime Green	1.07	8.26	120.14	0.31	2.44	408.69

## Metering Tip Kits Continued...

Table 3: Fusion Metering Tips 100.15K (Provided)						
Metering Tip Color	1 GPM Action Gap Proportioner			4 GPM Action Gap Proportioner		
	Oz./gal	ml/L	Ratio : 1	Oz./gal	ml/L	Ratio : 1
Tan	0.96	7.46	133.12	0.32	2.49	399.99
Orange	1.20	9.30	106.51	0.38	2.97	335.84
Turquoise	1.43	11.01	89.81	0.45	3.50	285.06
Pink	2.26	17.36	56.62	0.79	6.15	161.72
Light Blue	2.87	21.95	44.56	1.01	7.81	127.09
Brown	3.40	25.86	37.68	1.20	9.30	106.48
Red	4.10	31.08	31.18	1.42	10.99	89.99
White	4.67	35.18	27.43	1.67	12.86	76.79
Green	4.85	36.54	26.38	1.79	13.81	71.40
Blue	6.96	51.58	18.39	2.46	18.83	52.10
Yellow	10.27	74.31	12.46	3.79	28.79	33.74
Black	12.90	91.59	9.92	4.86	36.59	26.34
Purple	26.69	172.54	4.80	11.31	81.19	11.32
Gray	30.36	191.72	4.22	13.76	97.10	9.30
No Tip	45.48	262.17	2.81	24.77	162.15	5.17

INDUCTION RATES BASED ON WATER THIN PRODUCTS (1 cps)  
INDUCTION RATES VARY PRODUCT TO PRODUCT. FIELD TESTS ARE RECOMMENDED.

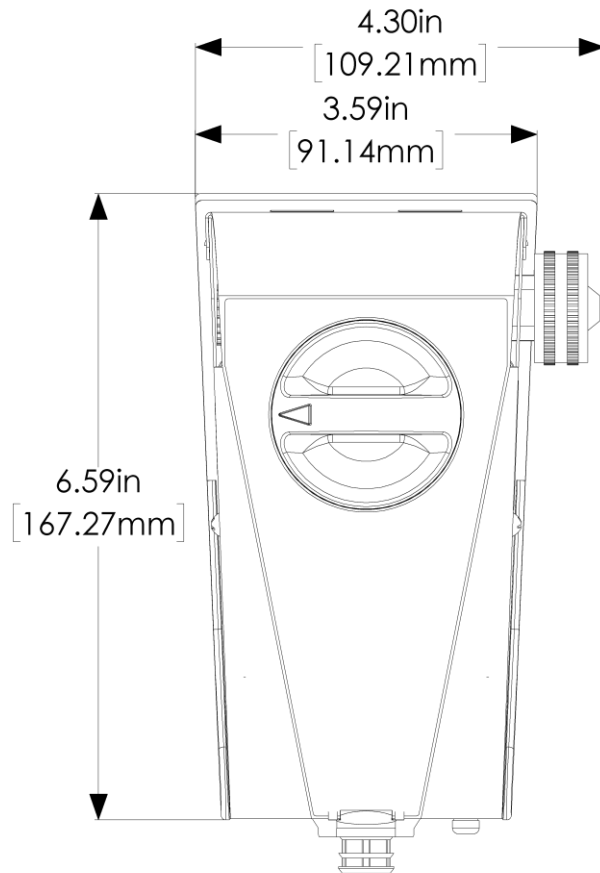
Table 4: Ultra Lean Metering Tips 100.15KU (Not Provided)						
Metering Tip Color	1 GPM Action Gap Proportioner			4 GPM Action Gap Proportioner		
	Oz./gal	ml/L	Ratio : 1	Oz./gal	ml/L	Ratio : 1
Copper	0.34	2.67	373.60	0.12	0.94	1060.18
Pumpkin	0.56	4.33	230.23	0.19	1.50	665.14
Burgundy	0.77	6.00	165.66	0.24	1.85	539.29
Lime Green	0.84	6.52	152.39	0.28	2.21	451.24

# Trouble Shooting

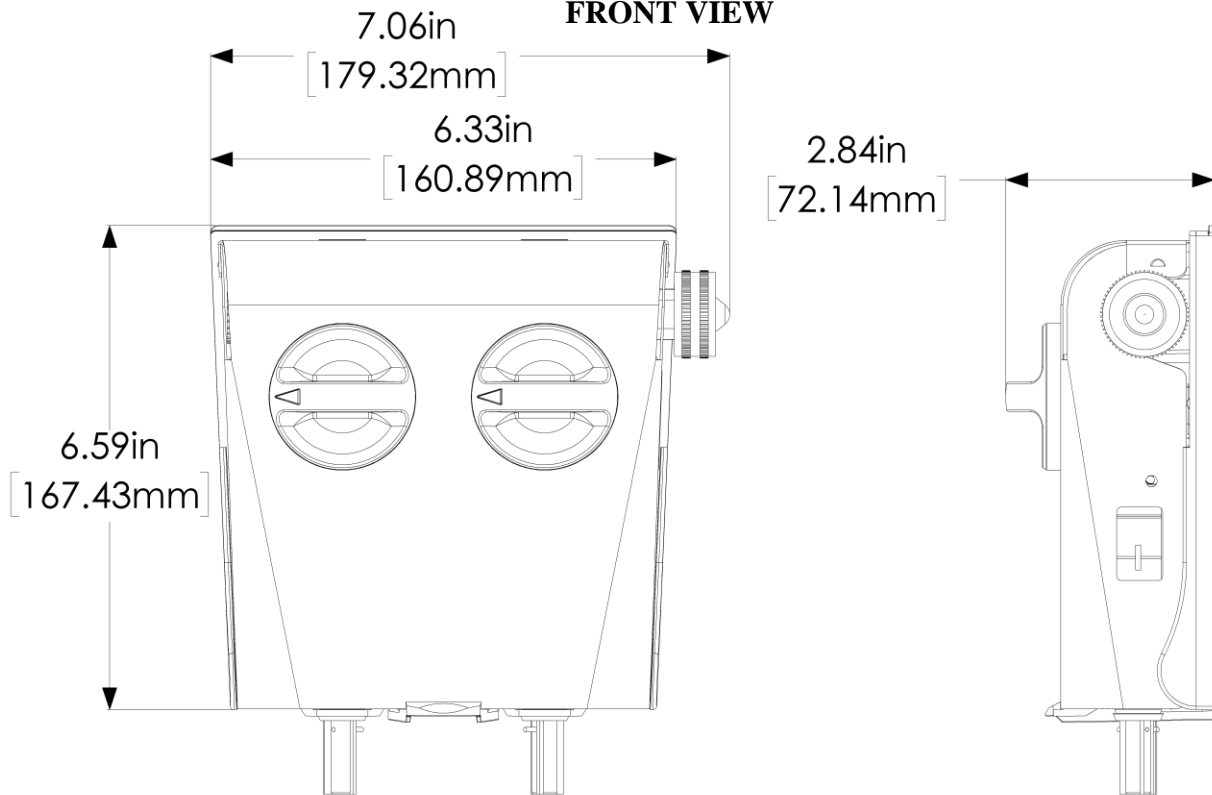
Symptom	Probable Cause	Remedy
Water valve does not shut off after use	Water pressure is above recommended range	Recommended water pressure is 30-70psi (2-5bar), install #66.43 pressure regulator
	Hole in the diaphragm	Replace the diaphragm
	Debris on the diaphragm or the valve actuation button	Rinse the diaphragm or button assembly
Proportioner continues to draw chemical after water valve is shut off	Concentrated chemical is positioned higher than the proportioner and is siphoning chemical	Move chemical container so it is lower than the proportioner
Activation knob does not return to off position	Spring is missing from knob	Replace spring, #40.909.2
Proportioner does not draw chemical properly	Insufficient water pressure	Minimum allowable water pressure is 20psi (1.38bar)
	Foot valve/SafeLink cap is clogged	Soak in hot water to clean
	Metering tip is clogged	Soak in hot water to clean
	Mineral deposits are located on air gap nozzle	Soak nozzle and inlet screen in hot water or in a mineral deposit removal chemical
	Proportioner elbow is loose, or O-ring seal has failed, allowing air in	Tighten seal, inspect O-ring condition, replace if needed, #63.78
Air Gap is spraying or dripping	Mineral deposits are located on air gap nozzle	Soak nozzle and inlet screen in hot water or in a mineral deposit removal chemical
Leaking at Action Gap	Bucket fill tube is raised higher than proportioner	Do not raise bucket fill tube higher than proportioner, ensure dispenser is mounted a minimum of 4' (1.2m) off floor
Leaking at water valve fittings	Retainer clip (orange) is not present	Replace retainer clip, #40.854.1
Leaking at threaded connections	Connection between dispenser and water supply is too loose or strainer washer is missing	Inspect connection, verify strainer washer is present, tighten fittings
	Proportioner and/or backflow preventer is too loose	Inspect connections, tighten fittings



# Product Dimensions



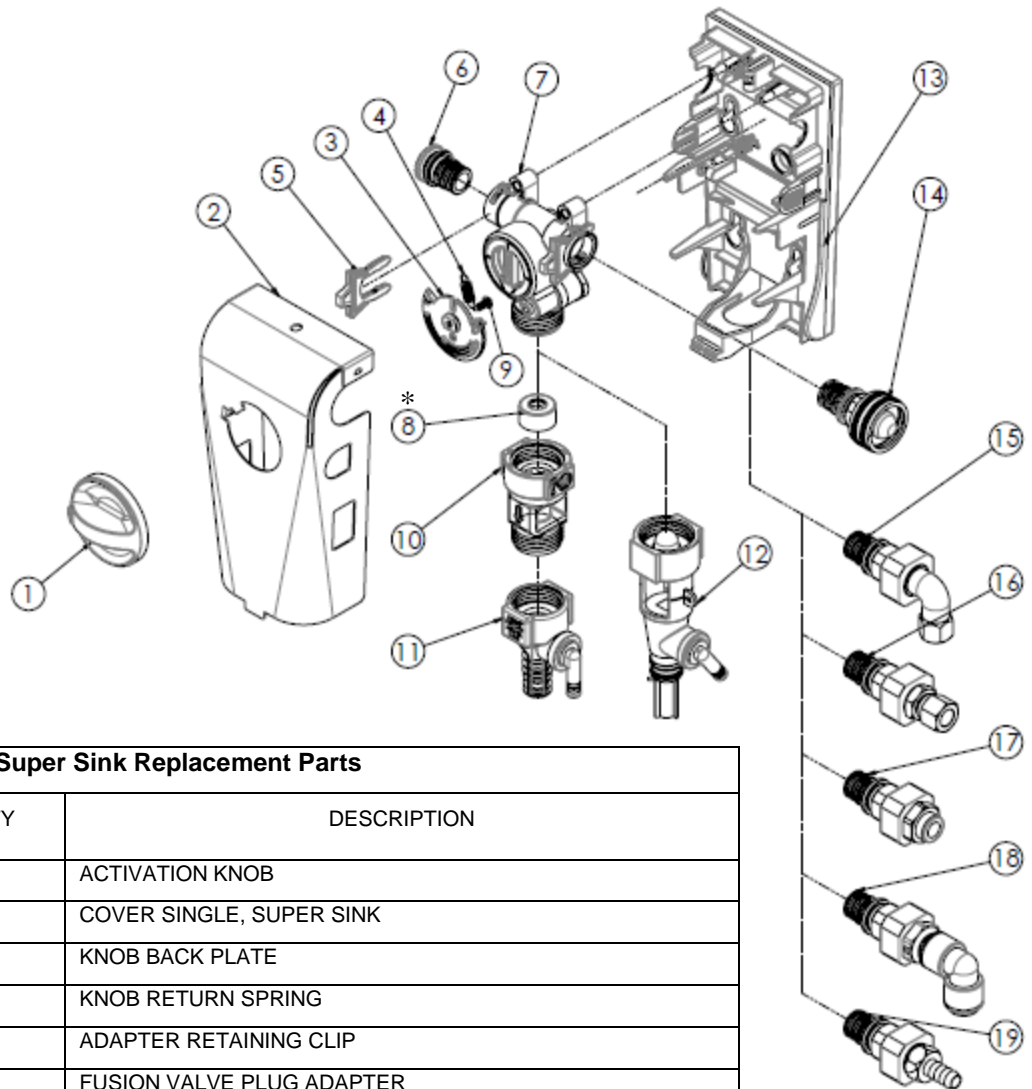
**SUPER SINK SINGLE  
FRONT VIEW**



**SUPER SINK DUAL  
FRONT VIEW**

**END VIEW**

# Replacement Parts



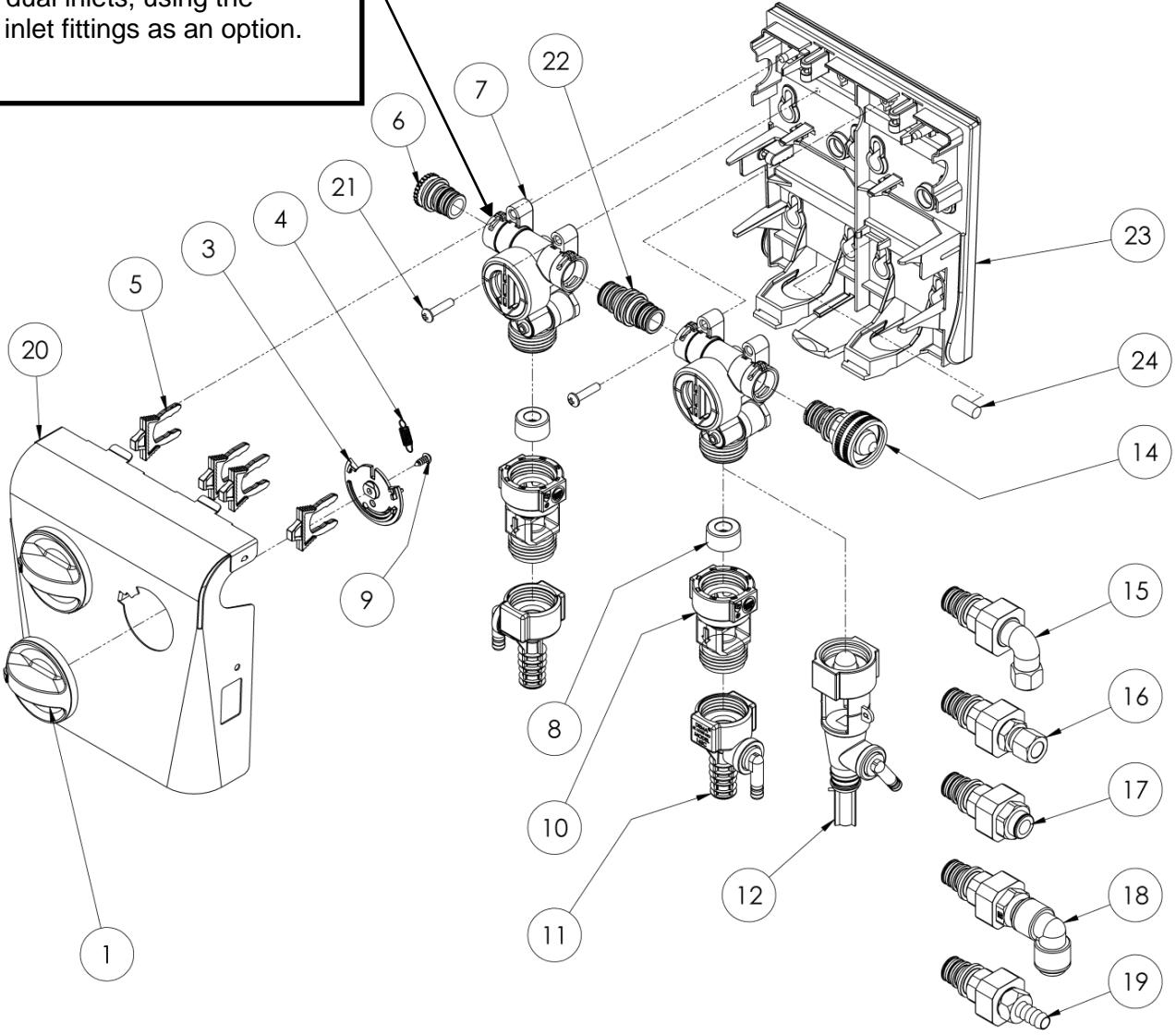
**Super Sink Replacement Parts**

Item No.	DEMA Part No.	QTY	DESCRIPTION
1	40.886.1	1	ACTIVATION KNOB
2	40.883.1	1	COVER SINGLE, SUPER SINK
3	40.887.1	1	KNOB BACK PLATE
4	40.909.2	1	KNOB RETURN SPRING
5	40.854.1	2	ADAPTER RETAINING CLIP
6	40.926.1	1	FUSION VALVE PLUG ADAPTER
7	40.847.2	1 - 2	FUSION VALVE ASSEMBLY, LESS ADAPTER
8	89.20.3	1	FLOW DISC ASSEMBLY (4GPM) <i>*Not Installed W/Air Gap Models*</i>
9	81.18.1	1	#6 HI-LO SCREW 3/8" LG.
10	16.30	1	ACTION GAP
11	61.22.3	1	PROPORTIONER FOR ACTION GAP (4 GPM)
12	61.22.3BAG	1	PROPORTIONER FOR AIR GAP (4 GPM)
13	40.890.1	1	BACK PLATE (SINGLE)
14	40.925.1	1	GARDEN HOSE WATER INLET FITTING (STANDARD THREAD)
14	40.925.2	1	GARDEN HOSE WATER INLET FITTING (BRITISH THREAD)
15	40.927.1	1	3/8" ELBOW BRASS COMPRESSION WATER INLET FITTING
16	40.927.2	1	3/8" STRAIGHT BRASS COMPRESSION WATER INLET FITTING
17	40.927.3	1	3/8" JOHN GUEST PUSH-ON WATER INLET FITTING
18	40.927.4	1	3/8" ELBOW JOHN GUEST PUSH-ON WATER INLET FITTING
19	40.927.5	1	3/8" BRASS BARB WATER INLET FITTING
20	40.884.1	1	COVER DUAL, SUPER SINK

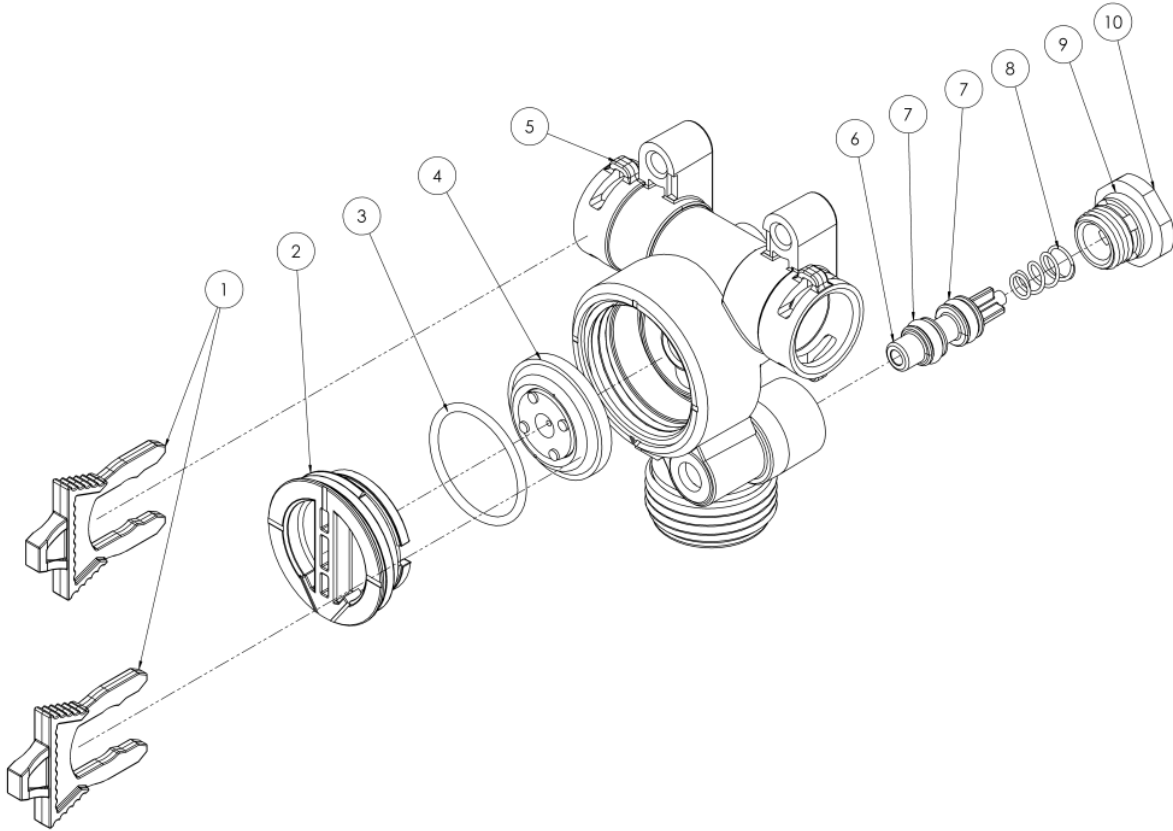
21	44.116.5	2	SCREW, #8 HI-LOW (DUAL SUPER SINK ONLY)
22	40.892.1	1	FUSION VALVE COUPLING, OPEN (DUAL SUPER SINK ONLY)
22	40.892.2	1	FUSION VALVE COUPLING, CLOSED (DUAL SUPER SINK ONLY)
23	40.891.1	1	BACK PLATE, SUPER SINK DUAL
24	40.970.1	1	BUBBLE LEVEL (DUAL SUPER SINK ONLY)
25	100.15K	1	TIP KIT
26	66.54	1	SCREW & ANCHOR KIT
27	L806	1	CHEMICAL LABEL
28	L1860	1	BRANDING LABEL (SINGLE SINK DISPENSER)
28	L1861	1	BRANDING LABEL (DUAL SINK DISPENSER)
29	63.75.1	1	TUBING, 9/16" I.D. OUTLET
30	100.16E.1	1	TUBING, INLET (CHEMICAL)
31	61.107.2	1	CERAMIC WEIGHT

**ITEMS #25 - #31 NOT SHOWN ON EXPLODED VIEWS**

SuperSink Dual units can be made to have dual inlets, using the various inlet fittings as an option.



# Replacement Parts Valve Body



**Valve Replacement Parts**

ITEM NO.	DEMA PART NO.	QTY	DESCRIPTION
1	40.854.1	2	RETAINING CLIP PILOT ACTIVATED VALVE
2	41.058.1	1	DIAPHRAGM CAP
3	619.21	1	O-RING SEAL EPDM (15/16" X 1/16")
4	98.26.1	1	1-1/16" DIAPHRAGM
5	40.824.1	1	VALVE BODY
6	40.849.1	1	BUTTON, PILOT ACTIVATED VALVE
7	640.106	2	O-RING SEAL (3/16"ID X 3/8"OD X 3/32"NOM.)
8	98.39.2	1	RETURN SPRING
9	63.78	1	O-RING-SEAL EPT (7/16" I.D. X 9/16" O.D. X 1/16 NOM.)
10	40.851.1	1	BOTTOM CAP

## Specifications

- Operation Pressure Rating: 20psi – 95psi
- Water Temperature Rating: 45°F (7°C) – 125°F (50°C) Max
- Back Flow Protection – ASSE 1055 (Action Gap & Air Gap)
- ASME A112.1.2 (Air Gap)

## Warranty

### Merchandise Returns

***No Merchandise Will Be Returned For Credit Without DEMA'S Written Permission. Returned Merchandise Authorization Number Is Required In Advance Of Return.***

### Product Warranty

DEMA products are warranted against defective material and workmanship under normal use and service for one year from the date of manufacture. This limited warranty does not apply to any products that have a normal life shorter than one year or failure and damage caused by chemicals, corrosion, physical abuse, or misapplication. Rubber and synthetic rubber parts such as “o”-rings, diaphragms, PVC tubing, and gaskets are considered expendable and are not covered under warranty. This warranty is extended only to the original buyer of DEMA products. If products are altered or repaired without prior approval DEMA, this warranty is void.

Defective units or parts should be returned to the factory with transportation prepaid. If inspection shows them to be defective, they will be repaired or replaced without charge, F.O.B. factory. DEMA assumes no liability for damages. Return merchandise authorization number must be granted in advance of return units for repair or replacement (See “Merchandise Returns” above).