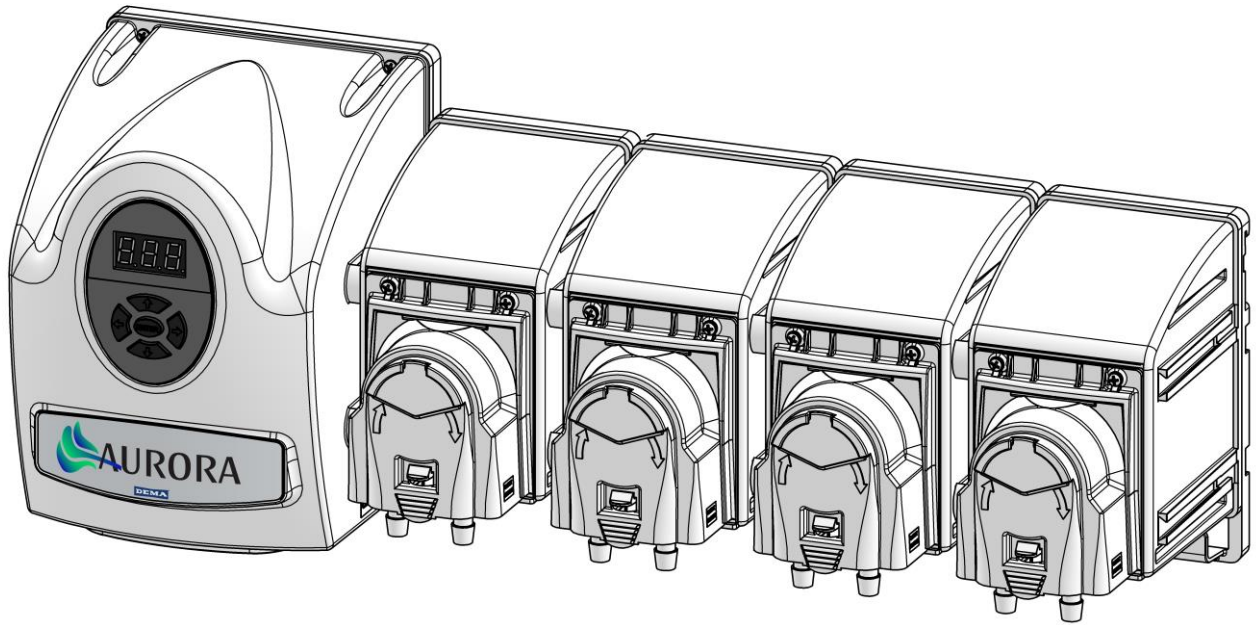


Aurora

Laundry Chemical Delivery System



Installation and Setup Guide

The DEMA® Aurora is a complete laundry chemical delivery system for commercial laundry applications. The Aurora features Bluetooth connectivity for programming using the Aurora App on smart devices and PC.

Warnings



Installation of DEMA products must meet all applicable electrical codes and regulations established by national, city, county, parish, provincial or other agencies. It is possible that electrical codes and regulations require that a certified electrical contractor or engineer perform the electrical installation. For questions, contact a certified electrician.



All installations must conform to local plumbing codes and use approved backflow prevention devices. A pressure indicating tee is to be installed with existing faucets according to local plumbing codes in the state of Wisconsin and any other state that requires the use of a pressure indicating tee.



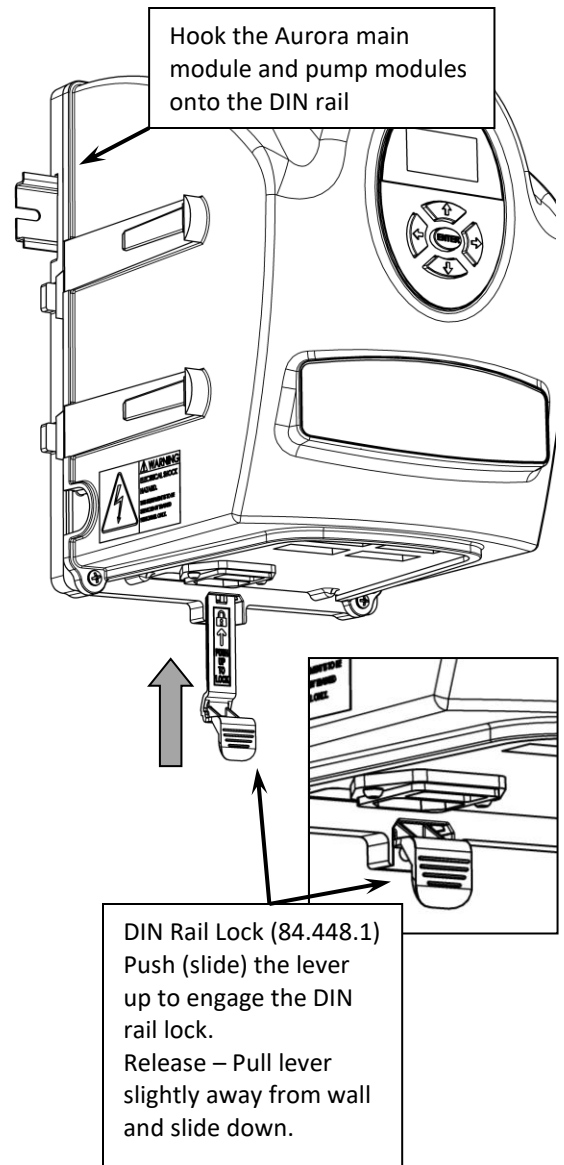
ALWAYS WEAR PROTECTIVE CLOTHING AND EYEWEAR WHEN WORKING WITH CHEMICAL PRODUCTS.

Installation

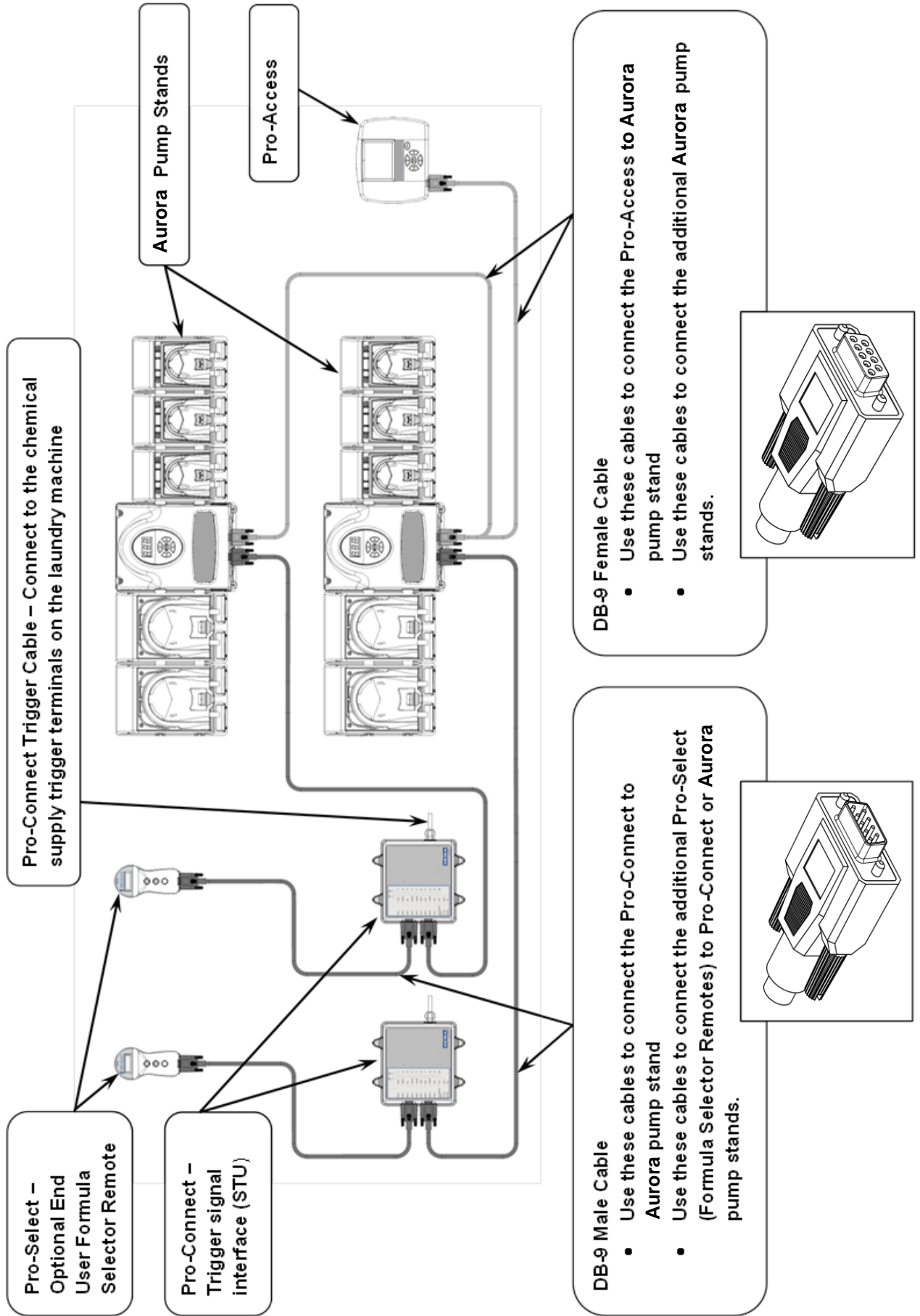


WARNING: INSTALLATION OF DEMA PRODUCTS MUST MEET ALL APPLICABLE ELECTRICAL CODES AND REGULATIONS ESTABLISHED BY NATIONAL, CITY, COUNTY, PARISH, PROVINCIAL OR OTHER AGENCIES. IT IS POSSIBLE THAT ELECTRICAL CODES AND REGULATIONS REQUIRE THAT A CERTIFIED ELECTRICAL CONTRACTOR OR ENGINEER PERFORM THE ELECTRICAL INSTALLATION. FOR QUESTIONS, CONTACT A CERTIFIED ELECTRICIAN.

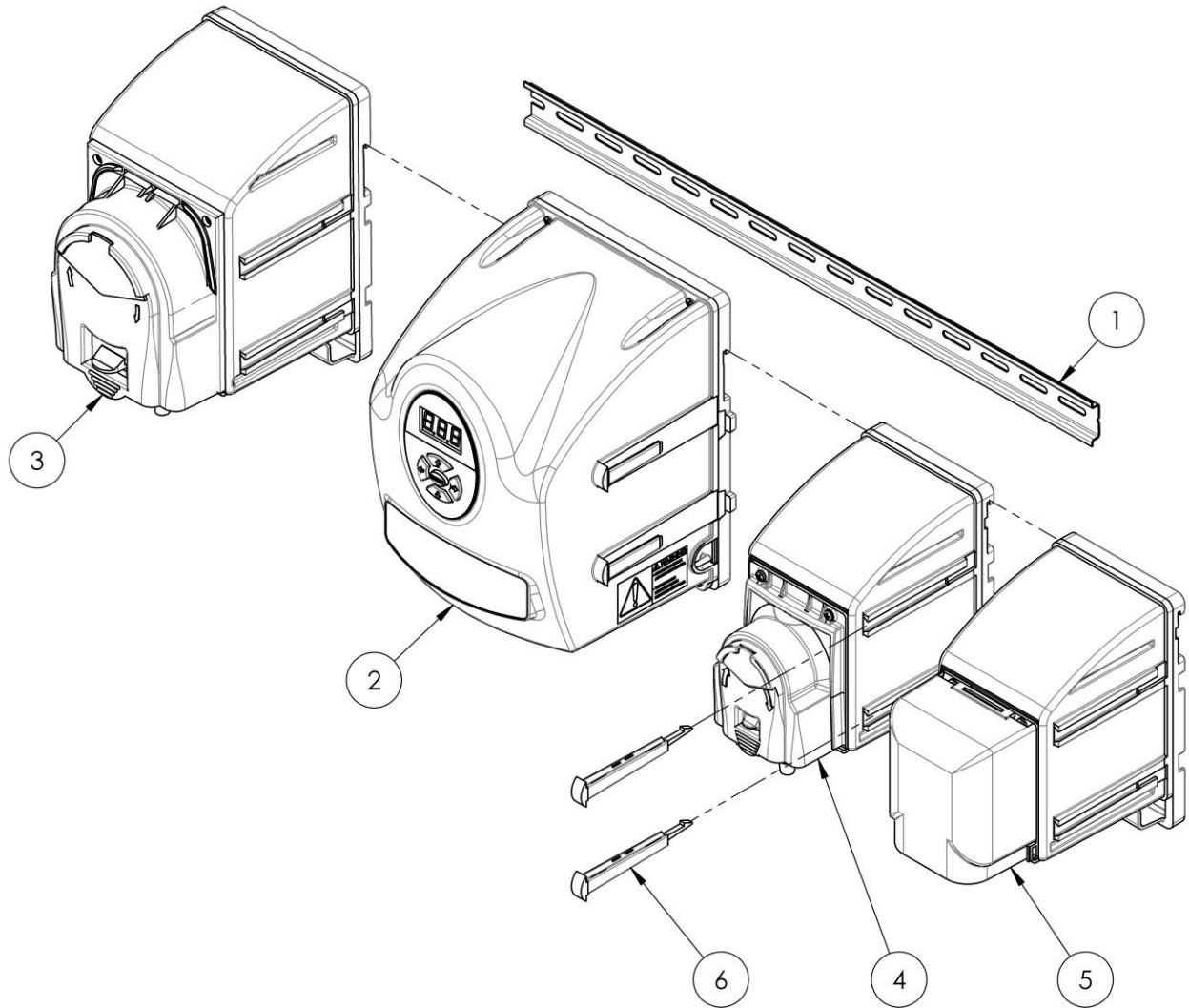
- Determine a suitable location to mount the Aurora. The following should be considered:
 - Length of power cord. The power cord is 10ft long and includes an 115VAC plug for wall outlet. The plug can be cut off so that the power cord can be hardwired or retrofitted with a different type of plug. Electrical requirements described on step 7.
 - Length of Aurora communication cables. The standard cable lengths are:
 - 25ft - Aurora Pump Stands to Pro Access - and – Aurora Pump Stand to Aurora Pump Stand
 - 8ft – Aurora Pump Stand to Pro-Connect (STU)
 - 8ft - Pro-Connect (STU) to Pro-Select (formula selector remote).
 - Avoid wet areas
 - Easy access for interfacing the buttons and display on pump stands and Pro-Access
 - Chemical container location
 - Wall or mounting surface must be suitable to attach (screw) the DIN mounting bracket.
- Mount the mounting bracket on the wall or on the DIN rail. Appropriate screws and anchors must be used based on the type of wall material. A level should be used when mounting the DIN rail.
- Mount the Aurora by hooking it onto the DIN mounting bracket.
- Lock the Aurora to the DIN rail by sliding the DIN Rail lock up and locks into place.
- Install and mount the Pro-Access, Pro-Connect and Pro-Select (see individual instruction guides for each component)
- Connect the Aurora communication system - See Cable Wiring Diagram on next page for cable connections
- Connect main power cord by plugging into a 115/230VAC wall outlet. The power cord has a 115VAC plug. The plug can be cut off and the power can be hardwired to a power source or an alternate plug. The Aurora will accept power between 100 and 250VAC 50/60Hz 2.0A.
- Connect chemical pickup and discharge tubing to the chemical pumps. Aurora is equipped with either John Guest push-on fittings or barb fittings at chemical pumps.
- Install chemical lines at the chemical containers and either a flush manifold or the laundry machine chemical injection connections.
- Prime chemical pumps either using the Pro-Access or at the face of the Aurora pump stand or the Aurora App.
 - Aurora pump stand – push the left arrow button and a P1 will be displayed. Press Enter to start and stop the pump. Use the Up and Down arrow buttons to choose additional pumps. Use the right arrow button to exit priming.
 - Pro-Access and App – Find the priming function in the pump stand menu
- See Pro-Access manual for programming. Additionally, the Aurora App can be used to program the Aurora using a smart phone/pad or PC.



Cable Wiring Diagram

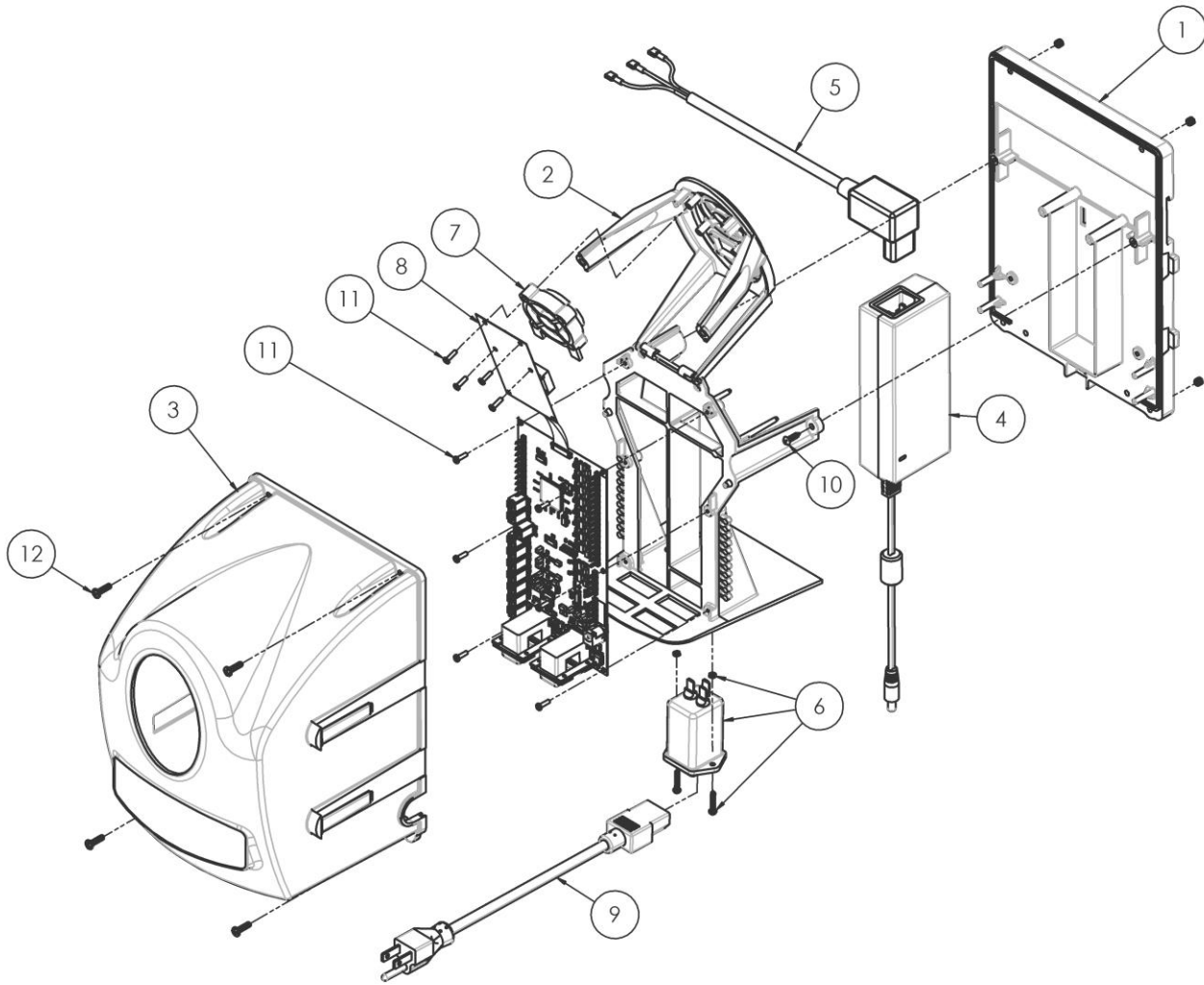


Replacement Modules



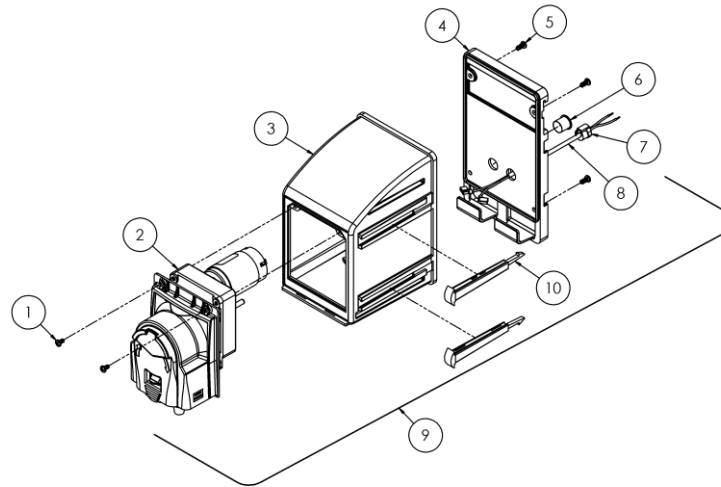
Aurora Pump Driver Module Assembly Components		
Item No.	DEMA Part Number	Description
1	84.447.1	DIN Rail – 3 pump
2	86.100.17	Aurora Pump Driver Module
3	86.100.19.105EJ	Large Blue Pump Module, 105RPM, EPDM Sqz. Tube, 3/8" JG
	86.100.19.105EB	Large Blue Pump Module, 105RPM, EPDM Sqz. Tube, 3/8" Barb
4	86.100.18.105EJ	Small Blue Pump Module, 105RPM, EPDM Sqz. Tube, 1/4" JG Ready
	86.100.18.105EB	Small Blue Pump Module, 105RPM, EPDM Sqz. Tube, 3/8" Barb
5	86.100.18.24DV	Flush Valve Module
6	81.144.1	Pump Module Connecting Pins

Pump Driver Replacement Parts

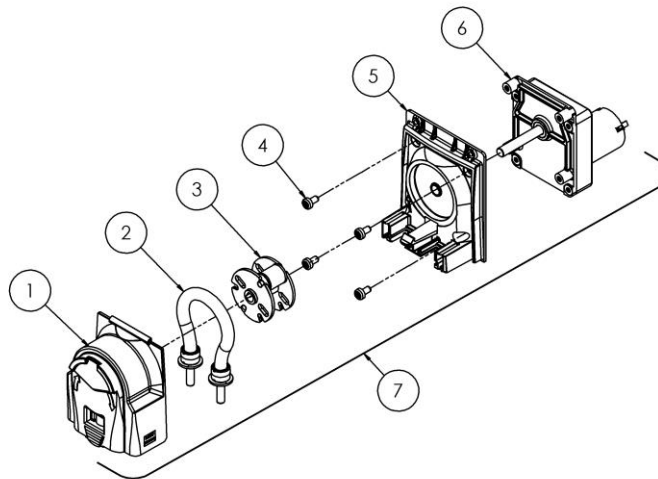


Aurora Pump Driver Module Assembly Components		
Item No.	DEMA Part Number	Description
1	86.100.11	Pump Driver Enclosure Back Assembly
2	86.100.12	Control Board Mounting Bracket Assembly
3	86.100.13	Pump Driver Enclosure with labels and mounting screws
4	86.100.14	Power Supply Kit
5	84.125.12	Power cable (internal)
6	86.100.15	Power Connector/Switch Module with mounting hardware
7	81.147.1	Key Pad
8	86.100.16	Aurora Control Board Assembly (includes main board & display)
9	84.440.3	Power Cord w/115VAC Plug
10	58.60	#6 x 1/2" Hi-Lo Screw (for plastic)
11	81.20.2	#4 x 3/8" Hi-Lo Screw (for plastic)
12	41.40.2	#6-32 x 1/2" Screw

Small Blue Pump Replacement Parts

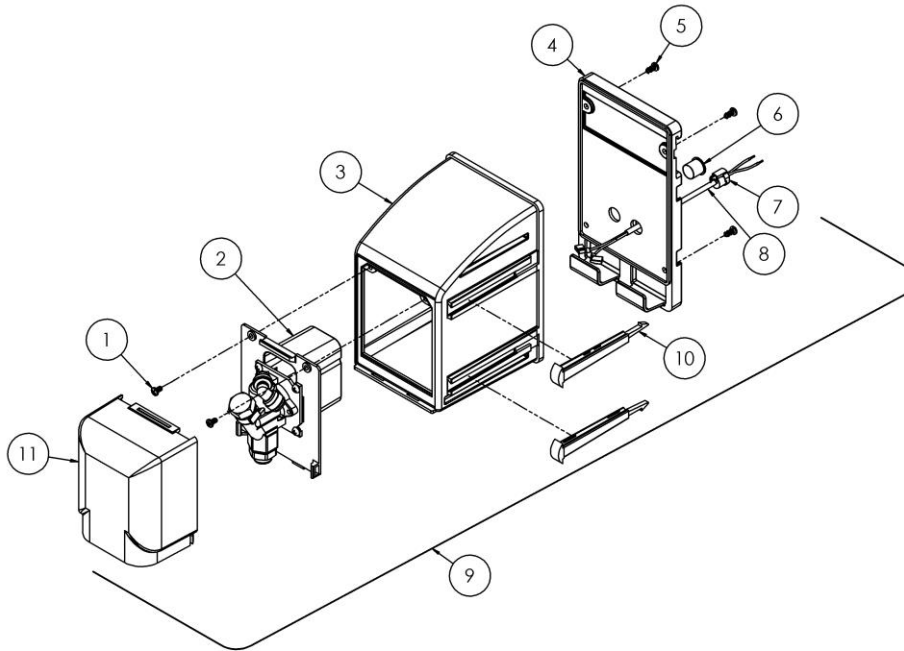


Aurora Quick Change Pump Replacement Parts - small blue pump 16oz/min or (460ml/min)		
Item No.	DEMA Part Number	Description
1	41.40.2	#6-32 Screw
2	81.118.29.9	Pump and Motor Assembly 105 RPM
3	81.197.1	Pump Module Enclosure Assembly (small blue pump)
4	84.434.1	Pump Module Enclosure Back (small blue pump)
5	44.116.2	#8 x 3/8" Hi Lo Screw (for plastic)
6	81.147.1	1/2" Hole Plug
7	81.183.5	1/2" Cable Strain Relief
8	81.196.10	Cable Assembly
9	86.100.18.105EJ	105 RPM Pump Module w/ 1/4" x 3/8" JG Fitting
	86.100.18.105EB	105 RPM Pump Module w/ 3/8" Barb Fitting
10	81.144.1	Side Module Joint



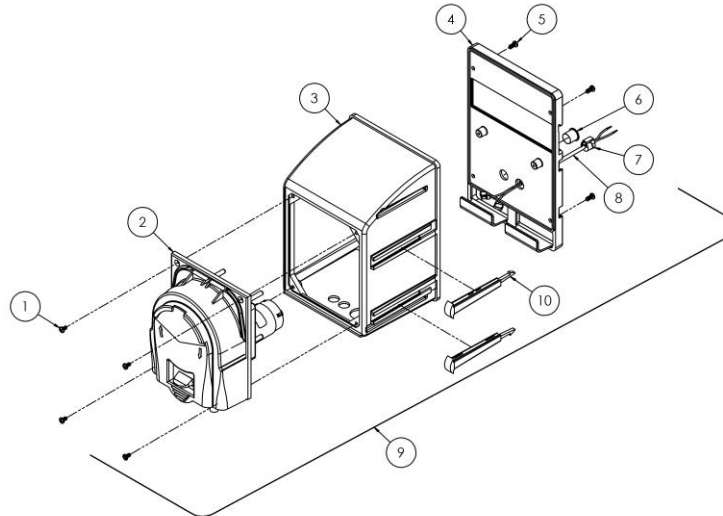
Aurora Quick Change Pump Replacement Parts – Small blue pump 16oz/min (460ml/min)		
Item No.	DEMA Part Number	Description
1	81.174.1	Small Pump Cover
2	81.177.1	Squeeze tube EPDM 7/16" OD x 1/4" ID JG Ready 1/4" Stem
	81.177.6	Squeeze tube EPDM 5/8" OD x 1/4" ID 3/8" Barb
3	81.118.28.1	Roller Block Assembly
4	25.85.2	10-32 x 1/2" Screw
5	81.128.2	Small Pump Base
6	80.59.105MK.1	105 RPM Motor 24VDC
7	81.118.29.5	105 RPM Pump Assembly Kit w/ 1/4" ID

Small Valve Module Assembly

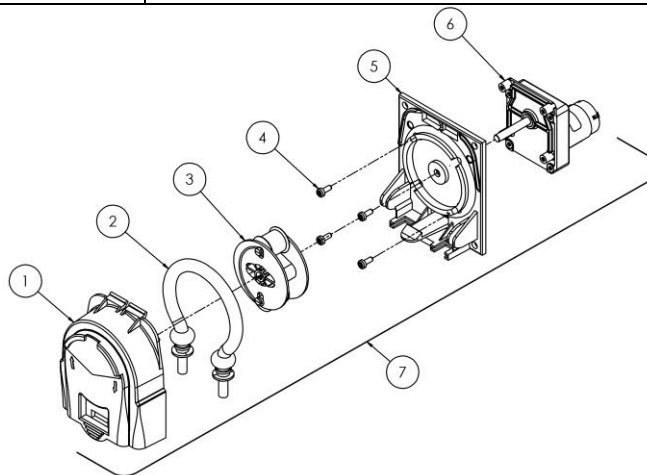


Aurora Quick Change Pump Replacement Parts – Small Side Valve Module Assembly		
Item No.	DEMA Part Number	Description
1	41.40.2	#6-32 Screw
2	84.182.1	Valve/Bracket Assembly
3	81.197.1	Pump Module Enclosure Assembly (small blue pump)
4	84.434.1	Pump Module Enclosure Back (small blue pump)
5	44.116.2	#8 x 3/8" Hi Lo Screw (for plastic)
6	81.147.1	1/2" Hole Plug
7	81.183.5	1/2" Cable Strain Relief
8	81.196.10	Cable Assembly
9	81.198.41	Small Side Valve Module Assembly
10	81.144.1	Side Module Joint
11	81.146.1	Valve Cover

Large Blue Pump Replacement Parts

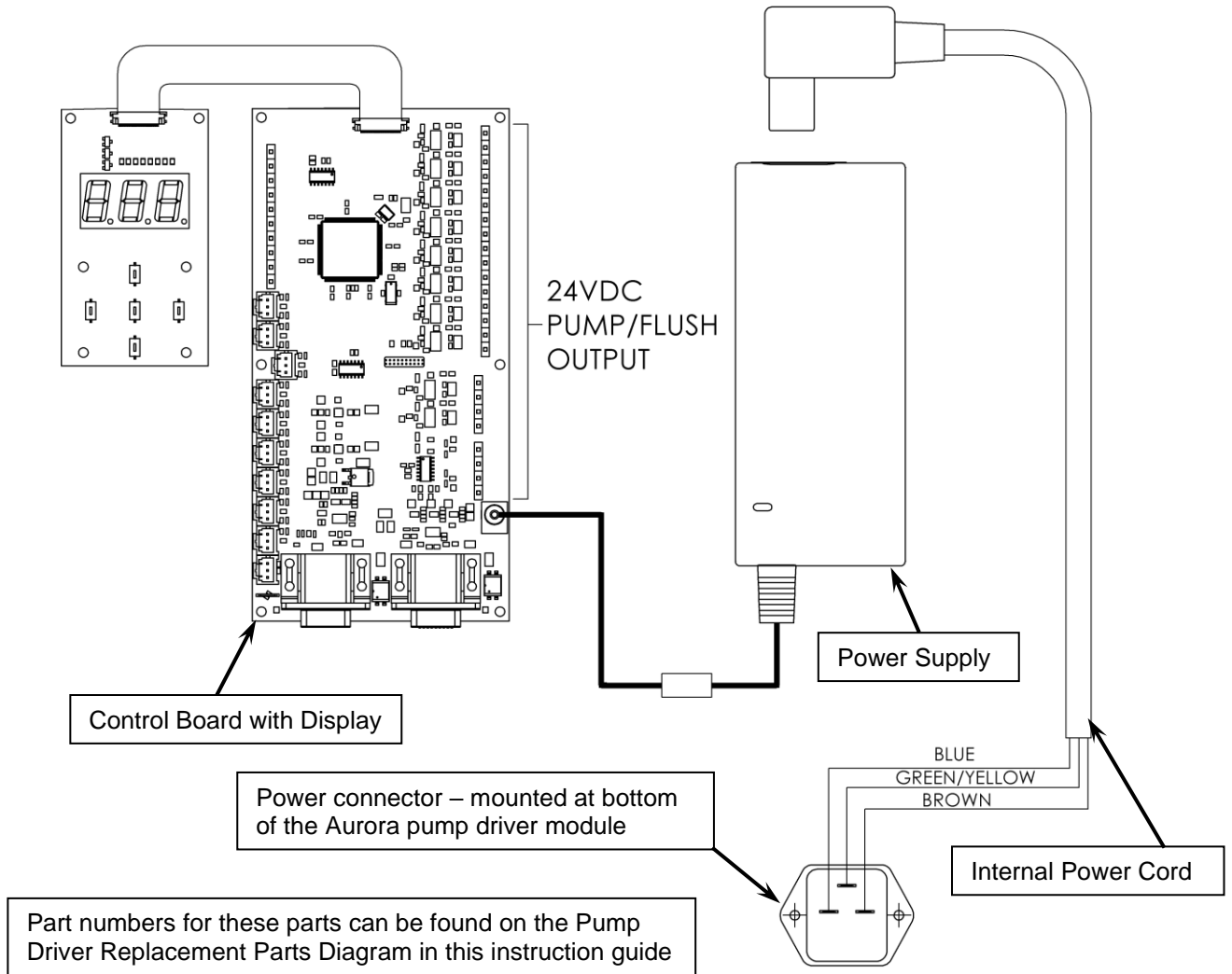


Aurora Quick Change Pump Replacement Parts - large blue pump 50oz/min or (1500ml/min)		
Item No.	DEMA Part Number	Description
1	41.40.2	#6-32 Screw
2	84.205.1	Pump and Motor Assembly 105 RPM
3	84.206.1	Pump Module Enclosure Assembly (large blue pump)
4	84.433.1	Pump Module Enclosure Back (large blue pump)
5	44.116.2	#8 x 3/8" Hi Lo Screw (for plastic)
6	81.147.1	1/2" Hole Plug
7	81.183.5	1/2" Cable Strain Relief
8	81.196.2	Cable Assembly
9	86.100.19.105EJ	Large Pump Module Assembly, 105 RPM, w/ JG Fitting
	86.100.19.105EB	Large Pump Module Assembly, 105 RPM, w/ Barb Fitting
10	81.144.1	Side Module Joint



Aurora Quick Change Pump Replacement Parts - Large blue pump 50oz/min (1500ml/min)		
Item No.	DEMA Part Number	Description
1	84.209.1	Large Pump Cover
2	84.208.1C	Squeeze tube EPDM 5/8" OD x 3/8" ID JG Ready 3/8" Stems
	84.208.2C	Squeeze tube EPDM 5/8" OD x 3/8" ID 3/8" Barb
3	81.118.28.4	Roller Block Assembly
4	25.85.2	10-32 x 1/2" Screw
5	84.188.1	Large Pump Base
6	80.59.105MK.1	105 RPM Motor 24VDC
7	84.205.1	Large Pump Assembly, 105 RPM JG Fitting
	84.205.2	Large Pump Assembly, 105 RPM Barb Fitting

Pump Driver Control Board and Power Supply Wiring Diagram



Kit and Accessory Items

DEMA Part No.	Description
81.182.3	3/8" x 3/8" John Guest Union (2 included with Aurora for each large blue pump)
81.182.5	3/8" x 1/4" John Guest Union (2 included with Aurora for each small blue pump)
58.110.1	1/4" John Guest Tee
58.110.2	3/8" John Guest Tee
58.103.2	1/4" John Guest x 1/4" MPT Straight Fitting
58.104.2	1/4" John Guest x 1/1" MPD Elbow Fitting
81.195.1	1/4" Male Stem (JG) x 1/4" Female (JG) Elbow Fitting
95.31	1/4" JG x Garden Hose Adapter
95.32	3/8" JG x Garden Hose Adapter
83.16.1	Velcro Patch (2 included with Aurora)
86.100.10.2	Aurora Connect w/25' Cable Kit (included with Aurora)
86.100.8.1	Aurora Pro Select w/8" Cable Kit (optional end user formula selector)
86.100.9	Aurora Pro Access Kit
25.115.100	3/8" OD x 100' LDPE Tubing
25.163.100	3/8" OD x 100' EVA Tubing
25.164.100	1/2" OD x 100' EVA Tubing

Specifications

Main Power	115/230VAC 50/60Hz 2A
Pump Motor/Valve Output	24VDC 1.25A
Operation Temperature	40°F – 115°F (5°C – 45°C)
CE	
Bluetooth	

Warranty

Merchandise Returns

No Merchandise will be Returned for Credit Without DEMA'S Written Permission. Returned Merchandise Authorization Number is Required in Advance of Return.

Product Warranty

DEMA products are warranted against defective material and workmanship under normal use and service for one year from the date of manufacture. This limited warranty does not apply to any products that have a normal life shorter than one year or failure and damage caused by chemicals, corrosion, physical abuse, or misapplication. Rubber and synthetic rubber parts such as "O"-rings, diaphragms, PVC tubing, and gaskets are considered expendable and are not covered under warranty. This warranty is extended only to the original buyer of DEMA products. If products are altered or repaired without prior approval of DEMA, this warranty is void.

Defective units or parts should be returned to the factory with transportation prepaid. If inspection shows them to be defective, they will be repaired or replaced without charge, F.O.B. factory. DEMA assumes no liability for damages. Return merchandise authorization number must be granted in advance of returned units for repair or replacement (See "Merchandise Returns" above).